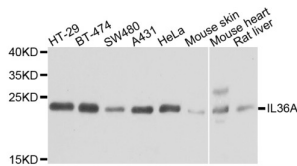


## Interleukin-1 Family Member 6 (IL1F6) Antibody

Catalogue No.: abx005735



Western blot analysis of extracts of various cell lines, using IL36A antibody (abx005735) at 1/1000 dilution.

IL1F6 (IL36A) Antibody is a Rabbit Polyclonal Antibody against IL1F6 (IL36A).

<b>Target:</b>	Interleukin-1 Family Member 6 (IL1F6)
<b>Clonality:</b>	Polyclonal
<b>Reactivity:</b>	Human, Mouse, Rat
<b>Tested Applications:</b>	WB
<b>Host:</b>	Rabbit
<b>Recommended dilutions:</b>	WB: 1/500 - 1/2000. Optimal dilutions/concentrations should be determined by the end user.
<b>Conjugation:</b>	Unconjugated
<b>Immunogen:</b>	Recombinant fusion protein containing a sequence corresponding to amino acids 1-158 of human IL36A.
<b>Isotype:</b>	IgG
<b>Form:</b>	Liquid
<b>Purification:</b>	Purified by affinity chromatography.
<b>Storage:</b>	Aliquot and store at -20°C. Avoid repeated freeze/thaw cycles.
<b>UniProt Primary AC:</b>	Q9UHA7 ( <a href="#">UniProt</a> , <a href="#">ExPASy</a> )
<b>Gene Symbol:</b>	IL36A
<b>GeneID:</b>	<a href="#">27179</a>

# Datasheet

Version: 1.0.0  
Revision date: 06 Oct 2024



**NCBI Accession:** NP\_055255.1

**String:** [9606.ENSP00000259211](#)

**Molecular Weight:** Calculated MW: 18 kDa  
Observed MW: 23 kDa

**Buffer:** PBS, pH 7.3, containing 0.02% sodium azide, 50% glycerol.

**Concentration:** > 0.2 mg/ml

**Note:** This product is for research use only.

For Reference Only