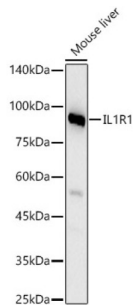


Datasheet

Version: 3.0.0
Revision date: 13 Mar 2025

Interleukin 1 Receptor Type I (IL1R1) Antibody

Catalogue No.: abx006309



Western blot analysis of lysates from Mouse liver, using IL1R1 Antibody at 1/600 dilution. Secondary antibody: HRP-conjugated Goat anti-Rabbit IgG (H+L) at 1/10000 dilution. Lysates/proteins: 25 µg per lane. Blocking buffer: 3% nonfat dry milk in TBST. Exposure time: 60s.

IL1R1 Antibody is a Rabbit Polyclonal Antibody against IL1R1.

Target:	Interleukin 1 Receptor Type I (IL1R1)
Clonality:	Polyclonal
Reactivity:	Human, Mouse, Rat
Tested Applications:	ELISA, WB
Host:	Rabbit
Recommended dilutions:	ELISA: 1 µg/ml, WB: 1/500 - 1/1000. Optimal dilutions/concentrations should be determined by the end user.
Conjugation:	Unconjugated
Immunogen:	A synthetic peptide corresponding to a sequence within amino acids 380-569 of human IL1R1.
Isotype:	IgG
Form:	Liquid
Purification:	Purified by affinity chromatography.
Storage:	Aliquot and store at -20°C. Avoid repeated freeze/thaw cycles.
UniProt Primary AC:	P14778 (UniProt , ExPASy)
Gene Symbol:	IL1R1
GeneID:	3554

Datasheet

Version: 3.0.0
Revision date: 13 Mar 2025



NCBI Accession: NP_000868.1

KEGG: hsa:3554

String: [9606.ENSP00000386380](#)

Molecular Weight: Calculated MW: 65 kDa
Observed MW: 80 kDa

Buffer: PBS, pH 7.3, containing 0.02% sodium azide, 50% glycerol.

Concentration: > 0.2 mg/ml

Note: THIS PRODUCT IS FOR RESEARCH USE ONLY. NOT FOR USE IN DIAGNOSTIC, THERAPEUTIC OR COSMETIC PROCEDURES. NOT FOR HUMAN OR ANIMAL CONSUMPTION.

For Reference Only