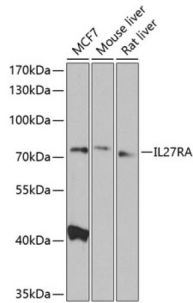
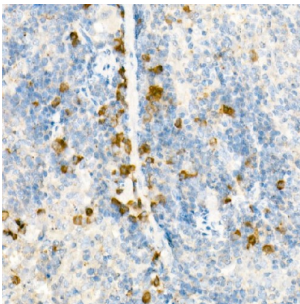


## Interleukin 27 Receptor Alpha (IL27RA) Antibody

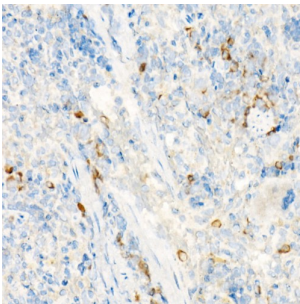
Catalogue No.: abx005722



Western blot analysis of extracts of various cell lines using IL27RA Antibody (1/1000 dilution).



Immunohistochemistry of paraffin-embedded mouse spleen using IL27RA Antibody (1/25 dilution, 40x lens). High pressure antigen retrieval was performed in 10 mM citrate buffer pH 6.0 before commencing with IHC staining protocol.



Immunohistochemistry of paraffin-embedded rat spleen using IL27RA antibody (1/25 dilution, 40x lens). High pressure antigen retrieval was performed in 10 mM citrate buffer pH 6.0 before commencing with IHC staining protocol.

IL27RA Antibody is a Rabbit Polyclonal Antibody against IL27RA.

**Target:** Interleukin 27 Receptor Alpha (IL27RA)

**Clonality:** Polyclonal

**Reactivity:** Human, Mouse, Rat

**Tested Applications:** WB, IHC

**Host:** Rabbit

**Recommended dilutions:** WB: 1/500 - 1/2000, IHC-P: 1/50 - 1/200. Not tested in IHC-F. Optimal dilutions/concentrations should be determined by the end user.

**Conjugation:** Unconjugated

# Datasheet

Version: 1.0.0  
Revision date: 12 Mar 2025



<b>Immunogen:</b>	Recombinant fusion protein corresponding to human IL27RA
<b>Isotype:</b>	IgG
<b>Form:</b>	Liquid
<b>Purification:</b>	Purified by affinity chromatography.
<b>Storage:</b>	Aliquot and store at -20°C. Avoid repeated freeze/thaw cycles.
<b>UniProt Primary AC:</b>	Q6UWB1 ( <a href="#">UniProt</a> , <a href="#">ExPASy</a> )
<b>Gene Symbol:</b>	IL27RA
<b>GeneID:</b>	<a href="#">9466</a>
<b>NCBI Accession:</b>	NP_004834.1
<b>KEGG:</b>	hsa:9466
<b>String:</b>	<a href="#">9606.ENSP00000263379</a>
<b>Molecular Weight:</b>	Calculated MW: 69 kDa Observed MW: 75 kDa
<b>Buffer:</b>	PBS, pH 7.3, containing 0.02% sodium azide, 50% glycerol.
<b>Concentration:</b>	1 mg/ml
<b>Note:</b>	THIS PRODUCT IS FOR RESEARCH USE ONLY. NOT FOR USE IN DIAGNOSTIC, THERAPEUTIC OR COSMETIC PROCEDURES. NOT FOR HUMAN OR ANIMAL CONSUMPTION.

FOR REFERENCE ONLY