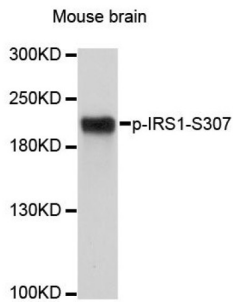


## Insulin Receptor Substrate 1 Phospho-Ser307 (IRS1 pS307) Antibody

Catalogue No.: abx123315



Western blot analysis of extracts of mouse brain, using Phospho-IRS1-S307 antibody (abx123315) at 1/500 dilution.

IRS1 (pS307) Antibody is a Rabbit Polyclonal Antibody against IRS1 (pS307).

<b>Target:</b>	Insulin Receptor Substrate 1 Phospho-Ser307 (IRS1 pS307)
<b>Clonality:</b>	Polyclonal
<b>Target Modification:</b>	Ser307
<b>Modification:</b>	Phosphorylation
<b>Reactivity:</b>	Human, Mouse, Rat
<b>Tested Applications:</b>	WB
<b>Host:</b>	Rabbit
<b>Recommended dilutions:</b>	WB: 1/500 - 1/1000. Optimal dilutions/concentrations should be determined by the end user.
<b>Conjugation:</b>	Unconjugated
<b>Immunogen:</b>	A synthetic phosphorylated peptide around S307 of human IRS1.
<b>Isotype:</b>	IgG
<b>Form:</b>	Liquid
<b>Purification:</b>	Purified by affinity chromatography.
<b>Storage:</b>	Aliquot and store at -20°C. Avoid repeated freeze/thaw cycles.
<b>UniProt Primary AC:</b>	P35568 ( <a href="#">UniProt</a> , <a href="#">ExpASY</a> )

# Datasheet

Version: 2.0.0  
Revision date: 22 Dec 2024



**Gene Symbol:** IRS1

**GeneID:** [3667](#)

**NCBI Accession:** NP\_005535.1

**KEGG:** hsa:3667

**String:** [9606.ENSP00000304895](#)

**Molecular Weight:** Calculated MW: 132 kDa  
Observed MW: 180 kDa

**Buffer:** PBS, pH 7.3, containing 0.05% Proclin-300, 50% glycerol.

**Concentration:** > 0.2 mg/ml

**Note:** This product is for research use only.

For Reference Only