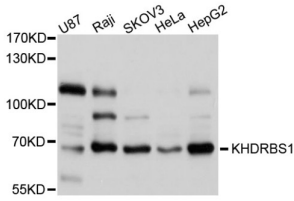
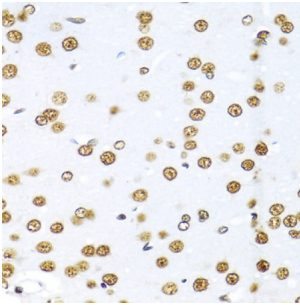


GAP-Associated Tyrosine Phosphoprotein P62 (KHDRBS1) Antibody

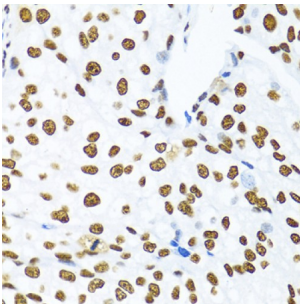
Catalogue No.: abx007308



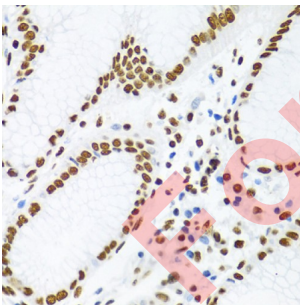
Western blot analysis of extracts of various cell lines, using KHDRBS1 antibody (abx007308) at 1/1000 dilution.



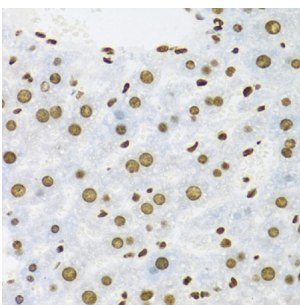
Immunohistochemistry of paraffin-embedded rat brain using KHDRBS1 antibody (abx007308) at dilution of 1/100 (40x lens).



Immunohistochemistry of paraffin-embedded human prostate cancer using KHDRBS1 antibody (abx007308) at dilution of 1/100 (40x lens).



Immunohistochemistry of paraffin-embedded human stomach using KHDRBS1 antibody (abx007308) at dilution of 1/100 (40x lens).



Immunohistochemistry of paraffin-embedded mouse liver using KHDRBS1 antibody (abx007308) at dilution of 1/100 (40x lens).

Datasheet

Version: 3.0.0
Revision date: 03 Dec 2024



KHDRBS1 Antibody is a Rabbit Polyclonal Antibody against KHDRBS1.

Target:	GAP-Associated Tyrosine Phosphoprotein P62 (KHDRBS1)
Clonality:	Polyclonal
Reactivity:	Human, Mouse, Rat
Tested Applications:	WB, IHC, IF/ICC
Host:	Rabbit
Recommended dilutions:	WB: 1/500 - 1/2000, IHC-P: 1/100 - 1/200, IF/ICC: 1/50 - 1/200. Not tested in IHC-F. Optimal dilutions/concentrations should be determined by the end user.
Conjugation:	Unconjugated
Immunogen:	A synthetic peptide corresponding to a sequence within amino acids 343-443 of human KHDRBS1/Sam68.
Isotype:	IgG
Form:	Liquid
Purification:	Purified by affinity chromatography.
Storage:	Aliquot and store at -20°C. Avoid repeated freeze/thaw cycles.
UniProt Primary AC:	Q07666 (UniProt , ExPASy)
Gene Symbol:	KHDRBS1
GeneID:	10657
NCBI Accession:	NP_006550.1
KEGG:	hsa:10657
String:	9606.ENSP00000313829
Molecular Weight:	Calculated MW: 48 kDa Observed MW: 68 kDa
Buffer:	PBS, pH 7.3, containing 0.02% sodium azide, 50% glycerol.
Concentration:	> 0.2 mg/ml

Datasheet

Version: 3.0.0

Revision date: 03 Dec 2024



Note: This product is for research use only.

For Reference Only