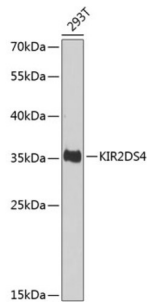


Killer Cell Immunoglobulin Like Receptor 2DS4 (KIR2DS4) Antibody

Catalogue No.: abx006269



Western blot analysis of lysates from 293T cells, using KIR2DS4 Antibody at 1/1000 dilution. Secondary antibody: HRP-conjugated Goat anti-Rabbit IgG (H+L) at 1/10000 dilution. Lysates/proteins: 25 µg per lane. Blocking buffer: 3% nonfat dry milk in TBST. Exposure time: 30s.

KIR2DS4 Antibody is a Rabbit Polyclonal Antibody against KIR2DS4.

| | |
|-------------------------------|--|
| Target: | Killer Cell Immunoglobulin Like Receptor 2DS4 (KIR2DS4) |
| Clonality: | Polyclonal |
| Reactivity: | Human |
| Tested Applications: | ELISA, WB |
| Host: | Rabbit |
| Recommended dilutions: | ELISA: 1 µg/ml, WB: 1/500 - 1/2000. Optimal dilutions/concentrations should be determined by the end user. |
| Conjugation: | Unconjugated |
| Immunogen: | Recombinant fusion protein containing a sequence corresponding to amino acids 22-245 of human KIR2DS4. |
| Isotype: | IgG |
| Form: | Liquid |
| Purification: | Purified by affinity chromatography. |
| Storage: | Aliquot and store at -20°C. Avoid repeated freeze/thaw cycles. |
| UniProt Primary AC: | P43632 (UniProt , ExpASY) |
| Gene Symbol: | KIR2DS4 |
| GeneID: | 3809 |

Datasheet

Version: 3.0.0

Revision date: 12 Mar 2025



NCBI Accession: NP_036446.3

KEGG: hsa:3809

Molecular Weight: Calculated MW: 34 kDa
Observed MW: 35 kDa

Buffer: PBS, pH 7.3, containing 0.02% sodium azide, 50% glycerol.

Concentration: > 0.2 mg/ml

Note: THIS PRODUCT IS FOR RESEARCH USE ONLY. NOT FOR USE IN DIAGNOSTIC, THERAPEUTIC OR COSMETIC PROCEDURES. NOT FOR HUMAN OR ANIMAL CONSUMPTION.

For Reference Only