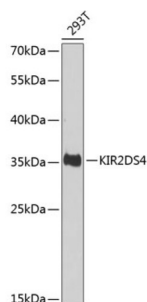


Killer Cell Immunoglobulin Like Receptor 2DS4 (KIR2DS4) Antibody

Catalogue No.: abx006269



Western blot analysis of lysates from 293T cells, using KIR2DS4 Antibody at 1/1000 dilution. Secondary antibody: HRP-conjugated Goat anti-Rabbit IgG (H+L) at 1/10000 dilution. Lysates/proteins: 25 µg per lane. Blocking buffer: 3% nonfat dry milk in TBST. Exposure time: 30s.

KIR2DS4 Antibody is a Rabbit Polyclonal Antibody against KIR2DS4.

Target:	Killer Cell Immunoglobulin Like Receptor 2DS4 (KIR2DS4)
Clonality:	Polyclonal
Reactivity:	Human
Tested Applications:	ELISA, WB
Host:	Rabbit
Recommended dilutions:	ELISA: 1 µg/ml, WB: 1/500 - 1/2000. Optimal dilutions/concentrations should be determined by the end user.
Conjugation:	Unconjugated
Immunogen:	Recombinant fusion protein containing a sequence corresponding to amino acids 22-245 of human KIR2DS4.
Isotype:	IgG
Form:	Liquid
Purification:	Purified by affinity chromatography.
Storage:	Aliquot and store at -20°C. Avoid repeated freeze/thaw cycles.
UniProt Primary AC:	P43632 (UniProt , ExpASY)
Gene Symbol:	KIR2DS4
GeneID:	3809

Datasheet

Version: 3.0.0
Revision date: 12 Mar 2025



NCBI Accession: NP_036446.3

KEGG: hsa:3809

Molecular Weight: Calculated MW: 34 kDa
Observed MW: 35 kDa

Buffer: PBS, pH 7.3, containing 0.02% sodium azide, 50% glycerol.

Concentration: > 0.2 mg/ml

Note: THIS PRODUCT IS FOR RESEARCH USE ONLY. NOT FOR USE IN DIAGNOSTIC, THERAPEUTIC OR COSMETIC PROCEDURES. NOT FOR HUMAN OR ANIMAL CONSUMPTION.

For Reference Only