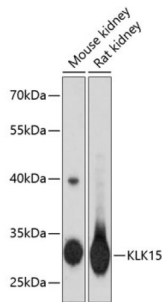


Kallikrein Related Peptidase 15 (KLK15) Antibody

Catalogue No.: abx006178



Western blot analysis of extracts of various cell lines using KLK15 Antibody (1/3000 dilution).

KLK15 Antibody is a Rabbit Polyclonal Antibody against KLK15.

Target:	Kallikrein Related Peptidase 15 (KLK15)
Clonality:	Polyclonal
Reactivity:	Mouse, Rat
Tested Applications:	WB
Host:	Rabbit
Recommended dilutions:	WB: 1/500 - 1/2000. Optimal dilutions/concentrations should be determined by the end user.
Conjugation:	Unconjugated
Immunogen:	Recombinant fusion protein corresponding to human KLK15
Isotype:	IgG
Form:	Liquid
Purification:	Purified by affinity chromatography.
Storage:	Aliquot and store at -20°C. Avoid repeated freeze/thaw cycles.
UniProt Primary AC:	Q9H2R5 (UniProt , ExPASy)
Gene Symbol:	KLK15
GeneID:	55554

Datasheet

Version: 2.0.0
Revision date: 13 Mar 2025



NCBI Accession: NP_059979.2

String: [9606.ENSP00000469315](#)

Molecular Weight: Calculated MW: 13 kDa/17 kDa/19 kDa/28 kDa
Observed MW: 28 kDa

Buffer: PBS, pH 7.3, containing 0.02% sodium azide, 50% glycerol.

Concentration: 1 mg/ml

Note: THIS PRODUCT IS FOR RESEARCH USE ONLY. NOT FOR USE IN DIAGNOSTIC, THERAPEUTIC OR COSMETIC PROCEDURES. NOT FOR HUMAN OR ANIMAL CONSUMPTION.

For Reference Only