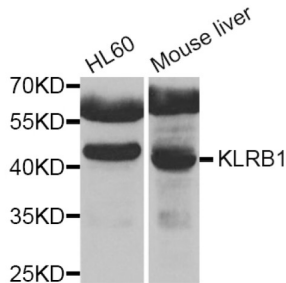


Killer Cell Lectin-Like Receptor Subfamily B Member 1 (KLRB1) Antibody

Catalogue No.: abx006405



Western blot analysis of extracts of various cell lines, using KLRB1 antibody (abx006405) at 1/1000 dilution.

KLRB1 Antibody is a Rabbit Polyclonal Antibody against KLRB1.

Target:	Killer Cell Lectin-Like Receptor Subfamily B Member 1 (KLRB1)
Clonality:	Polyclonal
Reactivity:	Human, Mouse, Rat
Tested Applications:	WB
Host:	Rabbit
Recommended dilutions:	WB: 1/500 - 1/2000. Optimal dilutions/concentrations should be determined by the end user.
Conjugation:	Unconjugated
Immunogen:	Recombinant fusion protein containing a sequence corresponding to amino acids 73-140 of human KLRB1.
Isotype:	IgG
Form:	Liquid
Purification:	Purified by affinity chromatography.
Storage:	Aliquot and store at -20°C. Avoid repeated freeze/thaw cycles.
UniProt Primary AC:	Q12918 (UniProt , ExPASy)
Gene Symbol:	KLRB1

Datasheet

Version: 1.0.0
Revision date: 03 Dec 2024



GeneID: [3820](#)

NCBI Accession: NP_002249.1

KEGG: hsa:3820

String: [9606.ENSP00000229402](#)

Molecular Weight: Calculated MW: 25 kDa
Observed MW: 47 kDa

Buffer: PBS, pH 7.3, containing 0.01% thimerosal, 50% glycerol.

Concentration: > 0.2 mg/ml

Note: This product is for research use only.

For Reference Only