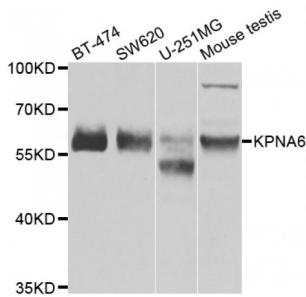


Datasheet

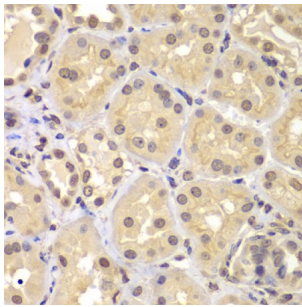
Version: 2.0.0
Revision date: 12 Aug 2024

Importin Subunit Alpha-7 (KPNA6) Antibody

Catalogue No.: abx006643



Western blot analysis of extracts of various cell lines, using KPNA6 antibody (abx006643) at 1/1000 dilution.



Immunohistochemistry of paraffin-embedded human kidney using KPNA6 antibody (abx006643) at dilution of 1/100 (40x lens).

KPNA6 Antibody is a Rabbit Polyclonal Antibody against KPNA6.

Target: Importin Subunit Alpha-7 (KPNA6)

Clonality: Polyclonal

Reactivity: Human, Mouse

Tested Applications: WB

Host: Rabbit

Recommended dilutions: WB: 1/1000 - 1/5000. Optimal dilutions/concentrations should be determined by the end user.

Conjugation: Unconjugated

Immunogen: Recombinant fusion protein containing a sequence corresponding to amino acids 277-536 of human KPNA6.

Isotype: IgG

Form: Liquid

Purification: Purified by affinity chromatography.

Datasheet

Version: 2.0.0
Revision date: 12 Aug 2024



Storage: Aliquot and store at -20°C. Avoid repeated freeze/thaw cycles.

UniProt Primary AC: O60684 ([UniProt](#), [ExPASy](#))

Gene Symbol: KPNA6

GeneID: [23633](#)

NCBI Accession: NP_036448.1

KEGG: hsa:23633

String: [9606.ENSP00000362728](#)

Molecular Weight: Calculated MW: 60 kDa
Observed MW: 60 kDa

Buffer: PBS, pH 7.3, containing 0.02% sodium azide, 50% glycerol.

Concentration: > 0.2 mg/ml

Note: This product is for research use only.

For Reference Only