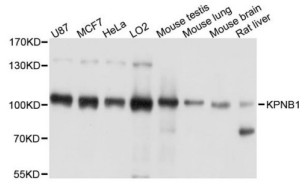


# Datasheet

Version: 1.0.0  
Revision date: 22 Dec 2024

## Importin Subunit Beta-1 (KPNB1) Antibody

Catalogue No.: abx124100



Western blot analysis of extracts of various cell lines, using KPNB1 antibody (abx124100) at 1/1000 dilution.

Importin Subunit Beta-1 (KPNB1) Antibody is a polyclonal antibody against Importin Subunit Beta-1.

<b>Target:</b>	Importin Subunit Beta-1 (KPNB1)
<b>Clonality:</b>	Polyclonal
<b>Reactivity:</b>	Human, Mouse, Rat
<b>Tested Applications:</b>	WB, IHC, IF/ICC
<b>Host:</b>	Rabbit
<b>Recommended dilutions:</b>	WB: 1/1000 - 1/5000, IHC-P: 1/50 - 1/100, IF/ICC: 1/50 - 1/200. Not tested in IHC-F. Optimal dilutions/concentrations should be determined by the end user.
<b>Conjugation:</b>	Unconjugated
<b>Immunogen:</b>	A synthetic peptide corresponding to a sequence within amino acids 300-400 of human KPNB1.
<b>Isotype:</b>	IgG
<b>Form:</b>	Liquid
<b>Purification:</b>	Purified by affinity chromatography.
<b>Storage:</b>	Aliquot and store at -20°C. Avoid repeated freeze/thaw cycles.
<b>UniProt Primary AC:</b>	Q14974 ( <a href="#">UniProt</a> , <a href="#">ExPASy</a> )
<b>Gene Symbol:</b>	KPNB1
<b>GeneID:</b>	<a href="#">3837</a>

# Datasheet

Version: 1.0.0  
Revision date: 22 Dec 2024



**NCBI Accession:** NP\_002256.2

**Molecular Weight:** Calculated MW: 97 kDa  
Observed MW: 102 kDa

**Buffer:** PBS, pH 7.3, containing 0.05% Proclin-300, 50% glycerol.

**Concentration:** > 0.2 mg/ml

**Note:** This product is for research use only.

For Reference Only