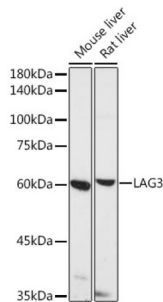


Lymphocyte Activation Gene 3 (LAG3) Antibody

Catalogue No.: abx007220



Western blot analysis of various lysates using LAG3 Antibody at 1/500 dilution. Secondary antibody: HRP-conjugated Goat anti-Rabbit IgG (H+L) at 1/10000 dilution. Lysates/proteins: 25 µg per lane. Blocking buffer: 3% nonfat dry milk in TBST. Exposure time: 90s.

LAG3 Antibody is a Rabbit Polyclonal Antibody against LAG3.

| | |
|-------------------------------|---|
| Target: | Lymphocyte Activation Gene 3 (LAG3) |
| Clonality: | Polyclonal |
| Reactivity: | Human, Mouse, Rat |
| Tested Applications: | ELISA, WB |
| Host: | Rabbit |
| Recommended dilutions: | ELISA: 1 µg/ml, WB: 1/100 - 1/500. Optimal dilutions/concentrations should be determined by the end user. |
| Conjugation: | Unconjugated |
| Immunogen: | Recombinant fusion protein containing a sequence corresponding to amino acids 29-170 of human LAG3. |
| Isotype: | IgG |
| Form: | Liquid |
| Purification: | Purified by affinity chromatography. |
| Storage: | Aliquot and store at -20°C. Avoid repeated freeze/thaw cycles. |
| UniProt Primary AC: | P18627 (UniProt , ExpASY) |
| Gene Symbol: | LAG3 |
| GeneID: | 3902 |

Datasheet

Version: 3.0.0
Revision date: 12 Mar 2025



NCBI Accession: NP_002277.4

KEGG: hsa:3902

String: [9606.ENSP00000203629](#)

Molecular Weight: Calculated MW: 57 kDa
Observed MW: 70 kDa

Buffer: PBS, pH 7.3, containing 0.02% sodium azide, 50% glycerol.

Concentration: > 0.2 mg/ml

Note: THIS PRODUCT IS FOR RESEARCH USE ONLY. NOT FOR USE IN DIAGNOSTIC, THERAPEUTIC OR COSMETIC PROCEDURES. NOT FOR HUMAN OR ANIMAL CONSUMPTION.

For Reference Only