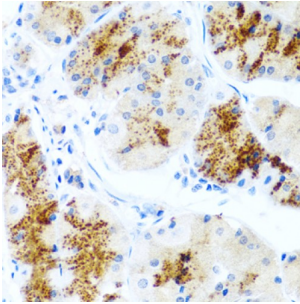


Laminin, Beta 3 (LAMB3) Antibody

Catalogue No.: abx005695



Immunohistochemistry of paraffin-embedded human stomach using LAMB3 antibody (abx005695) at dilution of 1/100 (40x lens).

LAMB3 Antibody is a Rabbit Polyclonal Antibody against LAMB3.

Target:	Laminin, Beta 3 (LAMB3)
Clonality:	Polyclonal
Reactivity:	Human
Tested Applications:	IHC
Host:	Rabbit
Recommended dilutions:	IHC-P: 1/50 - 1/100. Not tested in IHC-F. Optimal dilutions/concentrations should be determined by the end user.
Conjugation:	Unconjugated
Immunogen:	Recombinant fusion protein containing a sequence corresponding to amino acids 18-230 of human LAMB3.
Isotype:	IgG
Form:	Liquid
Purification:	Purified by affinity chromatography.
Storage:	Aliquot and store at -20°C. Avoid repeated freeze/thaw cycles.
UniProt Primary AC:	Q13751 (UniProt , ExpASY)
Gene Symbol:	LAMB3
GeneID:	3914

Datasheet

Version: 2.0.0
Revision date: 15 Oct 2024



NCBI Accession: NP_000219.2

KEGG: hsa:3914

String: [9606.ENSP00000375778](#)

Molecular Weight: Calculated MW: 130 kDa

Buffer: PBS, pH 7.3, containing 0.02% sodium azide, 50% glycerol.

Concentration: > 0.2 mg/ml

Note: This product is for research use only.

For Reference Only