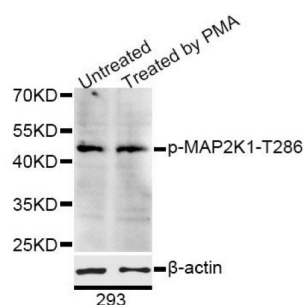


## MAP2K1 (pT285) Antibody

Catalogue No.: abx123368



Western blot analysis of extracts of 293 cells, using Phospho-MAP2K1-T286 antibody (abx123368) at 1/1000 dilution. 293 cells were treated by PMA/TPA (200nM) for 30 minutes after serum-starvation overnight.

MAP2K1 (pT285) Antibody is a Rabbit Polyclonal Antibody against MAP2K1 (pT285).

**Target:** MAP2K1 (pT285)

**Clonality:** Polyclonal

**Modification:** Phosphorylation

**Reactivity:** Human, Mouse, Rat

**Tested Applications:** WB

**Host:** Rabbit

**Recommended dilutions:** WB: 1/500 - 1/2000. Optimal dilutions/concentrations should be determined by the end user.

**Conjugation:** Unconjugated

**Immunogen:** A synthetic phosphorylated peptide around T286 of human MEK1.

**Isotype:** IgG

**Form:** Liquid

**Purification:** Purified by affinity chromatography.

**Storage:** Aliquot and store at -20°C. Avoid repeated freeze/thaw cycles.

**UniProt Primary AC:** Q02750 ([UniProt](#), [ExpASY](#))

**Gene Symbol:** MAP2K1

# Datasheet

Version: 1.0.0  
Revision date: 15 Jan 2025



**GeneID:** [5604](#)

**NCBI Accession:** NP\_002746.1

**KEGG:** hsa:5604

**String:** [9606.ENSP00000302486](#)

**Molecular Weight:** Calculated MW: 43 kDa  
Observed MW: 43 kDa

**Buffer:** PBS, pH 7.3, containing 0.02% sodium azide, 50% glycerol.

**Concentration:** > 0.2 mg/ml

**Note:** This product is for research use only.

For Reference Only