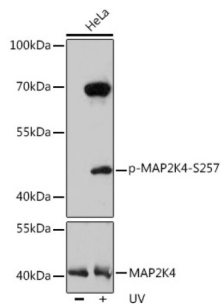


MAP2K4 (pS257) Antibody

Catalogue No.: abx123369



Western blot analysis of lysates from HeLa cells, using Phospho-MAP2K4-S257 Antibody. HeLa cells were treated by UV at room temperature for 15-30 minutes. Secondary antibody: HRP-conjugated Goat anti-Rabbit IgG (H+L) at 1/10000 dilution. Lysates/proteins: 25 µg per lane. Blocking buffer: 3% nonfat dry milk in TBST. Exposure time: 90s.

MAP2K4 (pS257) Antibody is a Rabbit Polyclonal Antibody against MAP2K4 (pS257).

Target:	MAP2K4 (pS257)
Clonality:	Polyclonal
Modification:	Phosphorylation
Reactivity:	Human, Mouse, Rat
Tested Applications:	ELISA, WB
Host:	Rabbit
Recommended dilutions:	ELISA: 1 µg/ml, WB: 1/500 - 1/2000. Optimal dilutions/concentrations should be determined by the end user.
Conjugation:	Unconjugated
Immunogen:	A synthetic phosphorylated peptide around S257 of human MAP2K4.
Isotype:	IgG
Form:	Liquid
Purification:	Purified by affinity chromatography.
Storage:	Aliquot and store at -20°C. Avoid repeated freeze/thaw cycles.
UniProt Primary AC:	P45985 (UniProt , ExPASy)
Gene Symbol:	MAP2K4

Datasheet

Version: 2.0.0
Revision date: 28 Jan 2025



GeneID: [6416](#)

NCBI Accession: NP_003001.1

KEGG: hsa:6416

String: [9606.ENSP00000410402](#)

Molecular Weight: Calculated MW: 44 kDa
Observed MW: 44 kDa

Buffer: PBS, pH 7.3, containing 0.02% sodium azide, 50% glycerol.

Concentration: > 0.2 mg/ml

Note: This product is for research use only.

For Reference Only