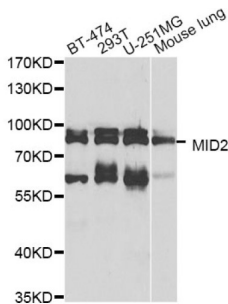


Probable E3 Ubiquitin-Protein Ligase MID2 (MID2) Antibody

Catalogue No.: abx006195



Western blot analysis of extracts of various cell lines, using MID2 antibody (abx006195) at 1/1000 dilution.

MID2 Antibody is a Rabbit Polyclonal Antibody against MID2.

Target:	Probable E3 Ubiquitin-Protein Ligase MID2 (MID2)
Clonality:	Polyclonal
Reactivity:	Human, Mouse
Tested Applications:	WB
Host:	Rabbit
Recommended dilutions:	WB: 1/500 - 1/2000. Optimal dilutions/concentrations should be determined by the end user.
Conjugation:	Unconjugated
Immunogen:	Recombinant fusion protein containing a sequence corresponding to amino acids 476-705 of human MID2.
Isotype:	IgG
Form:	Liquid
Purification:	Purified by affinity chromatography.
Storage:	Aliquot and store at -20°C. Avoid repeated freeze/thaw cycles.
UniProt Primary AC:	Q9UJV3 (UniProt , ExpASY)
Gene Symbol:	MID2
GeneID:	11043

Datasheet

Version: 2.0.0
Revision date: 25 Dec 2024



NCBI Accession: NP_438112.2

String: [9606.ENSP00000262843](#)

Molecular Weight: Calculated MW: 83 kDa
Observed MW: 83 kDa

Buffer: PBS, pH 7.3, containing 0.02% sodium azide, 50% glycerol.

Concentration: > 0.2 mg/ml

Note: This product is for research use only.

For Reference Only