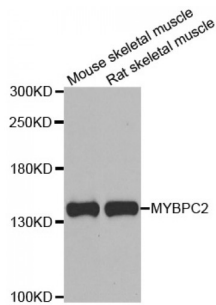


## Myosin-Binding Protein C, Fast-Type (MYBPC2) Antibody

Catalogue No.: abx006859



Western blot analysis of extracts of various cell lines, using MYBPC2 antibody (abx006859) at 1/1000 dilution.

MYBPC2 Antibody is a Rabbit Polyclonal Antibody against MYBPC2.

|                               |  |
|-------------------------------|--|
| <b>Target:</b>                | Myosin-Binding Protein C, Fast-Type (MYBPC2)   |
| <b>Clonality:</b>             | Polyclonal   |
| <b>Reactivity:</b>            | Mouse, Rat   |
| <b>Tested Applications:</b>   | WB, IHC  |
| <b>Host:</b>                  | Rabbit   |
| <b>Recommended dilutions:</b> | WB: 1/500 - 1/2000, IHC-P: 1/50 - 1/200. Not tested in IHC-F. Optimal dilutions/concentrations should be determined by the end user. |
| <b>Conjugation:</b>           | Unconjugated   |
| <b>Immunogen:</b>             | Recombinant fusion protein containing a sequence corresponding to amino acids 912-1141 of human MYBPC2.                              |
| <b>Isotype:</b>               | IgG  |
| <b>Form:</b>                  | Liquid   |
| <b>Purification:</b>          | Purified by affinity chromatography.   |
| <b>Storage:</b>               | Aliquot and store at -20°C. Avoid repeated freeze/thaw cycles.   |
| <b>UniProt Primary AC:</b>    | Q14324 ( <a href="#">UniProt</a> , <a href="#">ExpASY</a> )  |
| <b>Gene Symbol:</b>           | MYBPC2   |
| <b>GeneID:</b>                | <a href="#">4606</a>   |

# Datasheet

Version: 3.0.0  
Revision date: 26 Jun 2024



**OMIM:** [160793](#)

**NCBI Accession:** NP\_004524.3

**HGNC:** 7550

**KEGG:** hsa:4606

**Ensembl:** ENSG00000086967

**String:** [9606.ENSP00000350332](#)

**Molecular Weight:** Calculated MW: 128 kDa  
Observed MW: 135 kDa

**Buffer:** PBS, pH 7.3, containing 0.02% sodium azide, 50% glycerol.

**Concentration:** > 0.2 mg/ml

**Note:** This product is for research use only.

For Reference Only