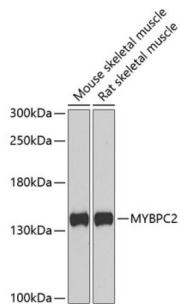


Myosin-Binding Protein C, Fast-Type (MYBPC2) Antibody

Catalogue No.: abx006859



Western blot analysis of various lysates using MYBPC2 Antibody at 1/1000 dilution. Secondary antibody: HRP-conjugated Goat anti-Rabbit IgG (H+L) at 1/10000 dilution. Lysates/proteins: 25 µg per lane. Blocking buffer: 3% nonfat dry milk in TBST. Exposure time: 90s.

MYBPC2 Antibody is a Rabbit Polyclonal Antibody against MYBPC2.

Target:	Myosin-Binding Protein C, Fast-Type (MYBPC2)
Clonality:	Polyclonal
Reactivity:	Mouse, Rat
Tested Applications:	ELISA, WB, IHC
Host:	Rabbit
Recommended dilutions:	ELISA: 1 µg/ml, WB: 1/500 - 1/2000, IHC-P: 1/50 - 1/200. Not tested in IHC-F. Optimal dilutions/concentrations should be determined by the end user.
Conjugation:	Unconjugated
Immunogen:	Recombinant fusion protein containing a sequence corresponding to amino acids 912-1141 of human MYBPC2.
Isotype:	IgG
Form:	Liquid
Purification:	Purified by affinity chromatography.
Storage:	Aliquot and store at -20°C. Avoid repeated freeze/thaw cycles.
UniProt Primary AC:	Q14324 (UniProt , ExpASY)
Gene Symbol:	MYBPC2
GeneID:	4606

Datasheet

Version: 4.0.0
Revision date: 13 Mar 2025



OMIM: [160793](#)

NCBI Accession: NP_004524.3

HGNC: 7550

KEGG: hsa:4606

Ensembl: ENSG00000086967

String: [9606.ENSP00000350332](#)

Molecular Weight: Calculated MW: 128 kDa
Observed MW: 135 kDa

Buffer: PBS, pH 7.3, containing 0.02% sodium azide, 50% glycerol.

Concentration: > 0.2 mg/ml

Note: THIS PRODUCT IS FOR RESEARCH USE ONLY. NOT FOR USE IN DIAGNOSTIC, THERAPEUTIC OR COSMETIC PROCEDURES. NOT FOR HUMAN OR ANIMAL CONSUMPTION.

For Reference Only