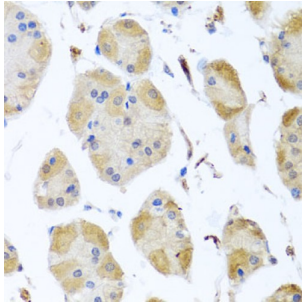
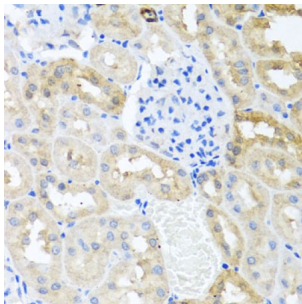


Myosin Light Chain Kinase, Smooth Muscle (MYLK) Antibody

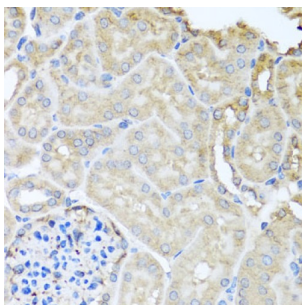
Catalogue No.: abx123100



Immunohistochemistry of paraffin-embedded Human stomach using MYLK Antibody (1/100 dilution, 40x lens).



Immunohistochemistry of paraffin-embedded Rat kidney using MYLK Antibody (1/100 dilution, 40x lens).



Immunohistochemistry of paraffin-embedded Mouse kidney using MYLK Antibody (1/100 dilution, 40x lens).

MYLK Antibody is a Rabbit Polyclonal Antibody against MYLK.

Target: Myosin Light Chain Kinase, Smooth Muscle (MYLK)

Clonality: Polyclonal

Reactivity: Human, Mouse, Rat

Tested Applications: IHC

Host: Rabbit

Recommended dilutions: IHC-P: 1/50 - 1/100. Not tested in IHC-F. Optimal dilutions/concentrations should be determined by the end user.

Conjugation: Unconjugated

Datasheet

Version: 2.0.0
Revision date: 13 Mar 2025



Immunogen:	Recombinant fusion protein corresponding to human MYLK
Isotype:	IgG
Form:	Liquid
Purification:	Purified by affinity chromatography.
Storage:	Aliquot and store at -20°C. Avoid repeated freeze/thaw cycles.
UniProt Primary AC:	Q15746 (UniProt , ExPASy)
Gene Symbol:	MYLK
GeneID:	4638
NCBI Accession:	NP_444253.3
KEGG:	hsa:4638
String:	9606.ENSP00000353452
Buffer:	PBS, pH 7.3, containing 0.02% sodium azide, 50% glycerol.
Concentration:	1 mg/ml
Note:	THIS PRODUCT IS FOR RESEARCH USE ONLY. NOT FOR USE IN DIAGNOSTIC, THERAPEUTIC OR COSMETIC PROCEDURES. NOT FOR HUMAN OR ANIMAL CONSUMPTION.

For Reference Only