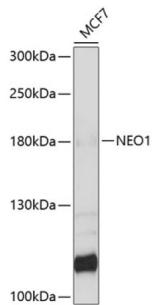


Neogenin 1 (NEO1) Antibody

Catalogue No.: abx124224



Western blot analysis of extracts of MCF-7 cells using NEO1 Antibody (1/1000 dilution).

NEO1 Antibody is a Rabbit Polyclonal Antibody against NEO1.

| | |
|-------------------------------|--|
| Target: | Neogenin 1 (NEO1) |
| Clonality: | Polyclonal |
| Reactivity: | Human |
| Tested Applications: | WB |
| Host: | Rabbit |
| Recommended dilutions: | WB: 1/500 - 1/1000. Optimal dilutions/concentrations should be determined by the end user. |
| Conjugation: | Unconjugated |
| Immunogen: | Recombinant fusion protein corresponding to human NEO1 |
| Isotype: | IgG |
| Form: | Liquid |
| Purification: | Purified by affinity chromatography. |
| Storage: | Aliquot and store at -20°C. Avoid repeated freeze/thaw cycles. |
| UniProt Primary AC: | Q92859 (UniProt , ExPASy) |
| Gene Symbol: | NEO1 |
| GeneID: | 4756 |

Datasheet

Version: 2.0.0

Revision date: 28 Jan 2025



| | |
|--------------------------|--|
| NCBI Accession: | NP_002490.2 |
| Molecular Weight: | Calculated MW: 154 kDa/158 kDa/160 kDa Observed MW: 160 kDa |
| Buffer: | PBS, pH 7.3, containing 0.02% sodium azide, 50% glycerol. |
| Concentration: | 1 mg/ml |
| Note: | This product is for research use only. |

For Reference Only