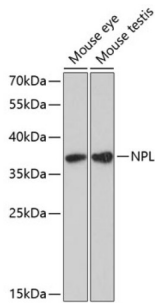


Datasheet

Version: 4.0.0
Revision date: 13 Mar 2025

N-Acetylneuraminase Lyase (NPL) Antibody

Catalogue No.: abx124803



Western blot analysis of extracts of various cell lines using NPL Antibody (1/3000 dilution).

NPL Antibody is a Rabbit Polyclonal Antibody against NPL.

Target: N-Acetylneuraminase Lyase (NPL)

Clonality: Polyclonal

Reactivity: Mouse, Rat

Tested Applications: WB

Host: Rabbit

Recommended dilutions: WB: 1/500 - 1/2000. Optimal dilutions/concentrations should be determined by the end user.

Conjugation: Unconjugated

Immunogen: Recombinant fusion protein corresponding to human NPL

Isotype: IgG

Form: Liquid

Purification: Purified by affinity chromatography.

Storage: Aliquot and store at -20°C. Avoid repeated freeze/thaw cycles.

UniProt Primary AC: Q9BXD5 ([UniProt](#), [ExPASy](#))

Gene Symbol: NPL

GeneID: [80896](#)

Datasheet

Version: 4.0.0

Revision date: 13 Mar 2025



NCBI Accession: NP_110396.1

Molecular Weight: Calculated MW: 12 kDa/26 kDa/31 kDa/33 kDa/35 kDa
Observed MW: 37 kDa

Buffer: PBS, pH 7.3, containing 0.02% sodium azide, 50% glycerol.

Concentration: 1 mg/ml

Note: THIS PRODUCT IS FOR RESEARCH USE ONLY. NOT FOR USE IN DIAGNOSTIC, THERAPEUTIC OR COSMETIC PROCEDURES. NOT FOR HUMAN OR ANIMAL CONSUMPTION.

For Reference Only