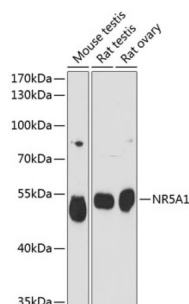


Nuclear Receptor Subfamily 5 Group A Member 1 (NR5A1) Antibody

Catalogue No.: abx123820



Western blot analysis of extracts of various cell lines using NR5A1 Antibody (1/3000 dilution).

NR5A1 Antibody is a Rabbit Polyclonal Antibody against NR5A1.

Target: Nuclear Receptor Subfamily 5 Group A Member 1 (NR5A1)**Clonality:** Polyclonal**Reactivity:** Human, Mouse, Rat**Tested Applications:** WB**Host:** Rabbit**Recommended dilutions:** WB: 1/500 - 1/2000. Optimal dilutions/concentrations should be determined by the end user.**Conjugation:** Unconjugated**Immunogen:** Recombinant fusion protein corresponding to human NR5A1**Isotype:** IgG**Form:** Liquid**Purification:** Purified by affinity chromatography.**Storage:** Aliquot and store at -20°C. Avoid repeated freeze/thaw cycles.**UniProt Primary AC:** Q13285 ([UniProt](#), [ExPASy](#))**Gene Symbol:** NR5A1**GeneID:** [2516](#)

Datasheet

Version: 3.0.0

Revision date: 13 Mar 2025



NCBI Accession: NP_004950.2

Molecular Weight: Calculated MW: 51 kDa
Observed MW: 52 kDa

Buffer: PBS, pH 7.3, containing 0.02% sodium azide, 50% glycerol.

Concentration: 1 mg/ml

Note: THIS PRODUCT IS FOR RESEARCH USE ONLY. NOT FOR USE IN DIAGNOSTIC, THERAPEUTIC OR COSMETIC PROCEDURES. NOT FOR HUMAN OR ANIMAL CONSUMPTION.

For Reference Only