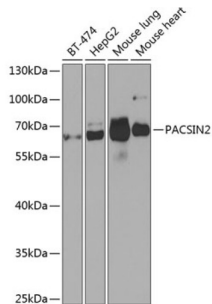


## Protein Kinase C And Casein Kinase Substrate In Neurons Protein 2 (PACSIN2) Antibody

Catalogue No.: abx006532



Western blot analysis of extracts of various cell lines using PACSIN2 Antibody (1/1000 dilution).

PACSIN2 Antibody is a Rabbit Polyclonal Antibody against PACSIN2.

<b>Target:</b>	Protein Kinase C And Casein Kinase Substrate In Neurons Protein 2 (PACSIN2)
<b>Clonality:</b>	Polyclonal
<b>Reactivity:</b>	Human
<b>Tested Applications:</b>	WB
<b>Host:</b>	Rabbit
<b>Recommended dilutions:</b>	WB: 1/500 - 1/2000. Optimal dilutions/concentrations should be determined by the end user.
<b>Conjugation:</b>	Unconjugated
<b>Immunogen:</b>	Recombinant fusion protein corresponding to human PACSIN2
<b>Isotype:</b>	IgG
<b>Form:</b>	Liquid
<b>Purification:</b>	Purified by affinity chromatography.
<b>Storage:</b>	Aliquot and store at -20°C. Avoid repeated freeze/thaw cycles.
<b>UniProt Primary AC:</b>	Q9UNF0 ( <a href="#">UniProt</a> , <a href="#">ExPASy</a> )
<b>Gene Symbol:</b>	PACSIN2

# Datasheet

Version: 3.0.0  
Revision date: 16 Feb 2025



**GeneID:** [11252](#)

**NCBI Accession:** NP\_009160.2

**String:** [9606.ENSP00000263246](#)

**Molecular Weight:** Calculated MW: 51 kDa/55 kDa

**Buffer:** PBS, pH 7.3, containing 0.02% sodium azide, 50% glycerol.

**Concentration:** 1 mg/ml

**Note:** This product is for research use only.

For Reference Only