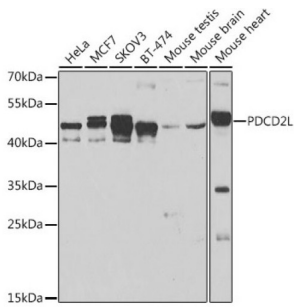
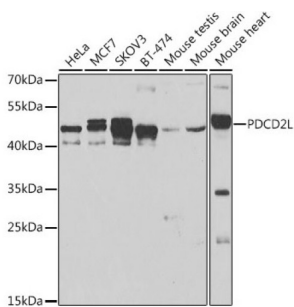


## Programmed Cell Death Protein 2-Like (PDCD2L) Antibody

Catalogue No.: abx006476



Western blot analysis of extracts of various cell lines, using PDCD2L antibody (abx006476) at 1/500 dilution.



Immunohistochemistry of paraffin-embedded human gastric using PDCD2L antibody (abx006476) at dilution of 1/100 (40x lens).

PDCD2L Antibody is a Rabbit Polyclonal Antibody against PDCD2L.

<b>Target:</b>	Programmed Cell Death Protein 2-Like (PDCD2L)
<b>Clonality:</b>	Polyclonal
<b>Reactivity:</b>	Human, Mouse, Rat
<b>Tested Applications:</b>	WB, IHC
<b>Host:</b>	Rabbit
<b>Recommended dilutions:</b>	WB: 1/500 - 1/2000, IHC-P: 1/50 - 1/200. Not tested in IHC-F. Optimal dilutions/concentrations should be determined by the end user.
<b>Conjugation:</b>	Unconjugated
<b>Immunogen:</b>	Recombinant fusion protein containing a sequence corresponding to amino acids 1-358 of human PDCD2L.
<b>Isotype:</b>	IgG
<b>Form:</b>	Liquid
<b>Purification:</b>	Purified by affinity chromatography.

# Datasheet

Version: 1.0.0  
Revision date: 11 Jan 2025



**Storage:** Aliquot and store at -20°C. Avoid repeated freeze/thaw cycles.

**UniProt Primary AC:** Q9BRP1 ([UniProt](#), [ExPASy](#))

**Gene Symbol:** PDCD2L

**GeneID:** [84306](#)

**NCBI Accession:** NP\_115722.1

**String:** [9606.ENSP00000246535](#)

**Molecular Weight:** Calculated MW: 39 kDa  
Observed MW: 45 kDa

**Buffer:** PBS, pH 7.3, containing 0.02% sodium azide, 50% glycerol.

**Concentration:** > 0.2 mg/ml

**Note:** This product is for research use only.

For Reference Only