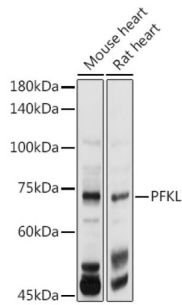
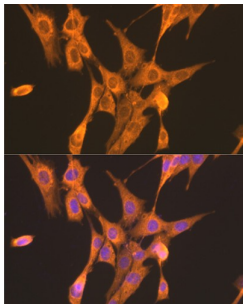


Phosphofructokinase, Liver (PFKL) Antibody

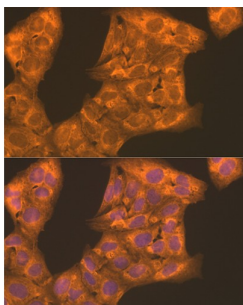
Catalogue No.: abx005650



Western blot analysis of extracts of various cell lines using PFKL Antibody (1/1000 dilution).



Immunofluorescence analysis of NIH/3T3 cells using PFKL Antibody (1/100 dilution). Blue: DAPI for nuclear staining.



Immunofluorescence analysis of U2OS cells using PFKL Antibody (1/100 dilution). Blue: DAPI for nuclear staining.

PFKL Antibody is a Rabbit Polyclonal Antibody against PFKL.

Target: Phosphofructokinase, Liver (PFKL)

Clonality: Polyclonal

Reactivity: Human, Mouse, Rat

Tested Applications: WB, IF/ICC

Host: Rabbit

Recommended dilutions: WB: 1/500 - 1/2000, IF/ICC: 1/50 - 1/200. Optimal dilutions/concentrations should be determined by the end user.

Conjugation: Unconjugated

Datasheet

Version: 2.0.0
Revision date: 23 Feb 2025



Immunogen:	Recombinant fusion protein corresponding to human PFKL
Isotype:	IgG
Form:	Liquid
Purification:	Purified by affinity chromatography.
Storage:	Aliquot and store at -20°C. Avoid repeated freeze/thaw cycles.
UniProt Primary AC:	P17858 (UniProt , ExPASy)
Gene Symbol:	PFKL
GeneID:	5211
NCBI Accession:	NP_002617.3
KEGG:	hsa:5211
String:	9606.ENSP00000269848
Molecular Weight:	Calculated MW: 85 kDa/90 kDa Observed MW: 75 kDa
Buffer:	PBS, pH 7.3, containing 0.01% thiomersal, 50% glycerol.
Concentration:	1 mg/ml
Note:	This product is for research use only.

For Reference Only