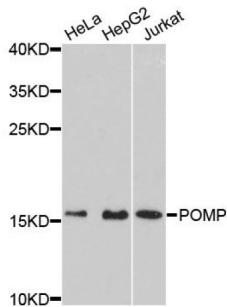


Proteasome Maturation Protein (POMP) Antibody

Catalogue No.: abx124640



Western blot analysis of extracts of various cell lines, using POMP antibody (abx124640) at 1:3000 dilution.

POMP Antibody is a Rabbit Polyclonal Antibody against POMP.

Target:	Proteasome Maturation Protein (POMP)
Clonality:	Polyclonal
Reactivity:	Human
Tested Applications:	WB
Host:	Rabbit
Recommended dilutions:	WB: 1/500 - 1/1000. Optimal dilutions/concentrations should be determined by the end user.
Conjugation:	Unconjugated
Immunogen:	Recombinant fusion protein containing a sequence corresponding to amino acids 1-141 of human POMP.
Isotype:	IgG
Form:	Liquid
Purification:	Purified by affinity chromatography.
Storage:	Aliquot and store at -20°C. Avoid repeated freeze/thaw cycles.
UniProt Primary AC:	Q9Y244 (UniProt , ExPASy)
Gene Symbol:	POMP
GeneID:	51371

Datasheet

Version: 3.0.0
Revision date: 22 Dec 2024



NCBI Accession: NP_057016.1

Molecular Weight: Calculated MW: 16 kDa
Observed MW: 16 kDa

Buffer: PBS, pH 7.3, containing 0.01% thimerosal, 50% glycerol.

Concentration: > 0.2 mg/ml

Note: This product is for research use only.

For Reference Only