

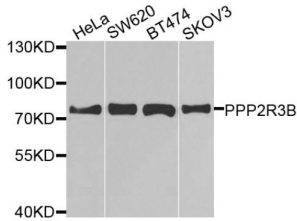
Datasheet

Version: 4.0.0
Revision date: 28 Nov 2024



Protein Phosphatase 2 Regulatory Subunit B Beta (PPP2R3B) Antibody

Catalogue No.: abx005853



Western blot analysis of extracts of various cell lines, using PPP2R3B antibody (abx005853) at 1/1000 dilution.

PPP2R3B Antibody is a Rabbit Polyclonal Antibody against PPP2R3B.

Target:	Protein Phosphatase 2 Regulatory Subunit B Beta (PPP2R3B)
Clonality:	Polyclonal
Reactivity:	Human, Mouse
Tested Applications:	WB
Host:	Rabbit
Recommended dilutions:	WB: 1/500 - 1/2000. Optimal dilutions/concentrations should be determined by the end user.
Conjugation:	Unconjugated
Immunogen:	Recombinant fusion protein containing a sequence corresponding to amino acids 356-575 of human PPP2R3B.
Isotype:	IgG
Form:	Liquid
Purification:	Purified by affinity chromatography.
Storage:	Aliquot and store at -20°C. Avoid repeated freeze/thaw cycles.
UniProt Primary AC:	Q9Y5P8 (UniProt , ExpASY)
Gene Symbol:	PPP2R3B
GeneID:	28227

Datasheet

Version: 4.0.0
Revision date: 28 Nov 2024



NCBI Accession: NP_037371.2

String: [9606.ENSP00000375080](#)

Molecular Weight: Calculated MW: 65 kDa
Observed MW: 80 kDa

Buffer: PBS, pH 7.3, containing 0.02% sodium azide, 50% glycerol.

Concentration: > 0.2 mg/ml

Note: This product is for research use only.

For Reference Only