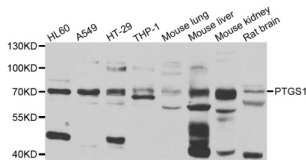
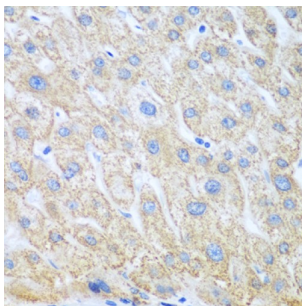


## Prostaglandin G/H Synthase 1 (PTGS1) Antibody

Catalogue No.: abx006921



Western blot analysis of extracts of various cell lines, using PTGS1 antibody (abx006921) at 1/1000 dilution.



Immunohistochemistry of paraffin-embedded human liver cancer using PTGS1 antibody (abx006921) at dilution of 1/100 (40x lens).

PTGS1 Antibody is a Rabbit Polyclonal Antibody against PTGS1.

<b>Target:</b>	Prostaglandin G/H Synthase 1 (PTGS1)
<b>Clonality:</b>	Polyclonal
<b>Reactivity:</b>	Human, Mouse, Rat
<b>Tested Applications:</b>	WB, IHC, IF/ICC
<b>Host:</b>	Rabbit
<b>Recommended dilutions:</b>	WB: 1/500 - 1/2000, IHC-P: 1/100 - 1/200, IF/ICC: 1/50 - 1/200. Not tested in IHC-F. Optimal dilutions/concentrations should be determined by the end user.
<b>Conjugation:</b>	Unconjugated
<b>Immunogen:</b>	Recombinant fusion protein containing a sequence corresponding to amino acids 1-180 of human COX1/COX1/PTGS1.
<b>Isotype:</b>	IgG
<b>Form:</b>	Liquid
<b>Purification:</b>	Purified by affinity chromatography.

# Datasheet

Version: 2.0.0  
Revision date: 06 Oct 2024



**Storage:** Aliquot and store at -20°C. Avoid repeated freeze/thaw cycles.

**UniProt Primary AC:** P23219 ([UniProt](#), [ExPASy](#))

**Gene Symbol:** PTGS1

**GeneID:** [5742](#)

**OMIM:** [176805](#)

**NCBI Accession:** NP\_001258094.1

**HGNC:** 9604

**KEGG:** hsa:5742

**Ensembl:** ENSG00000095303

**String:** [9606.ENSP00000354612](#)

**Molecular Weight:** Calculated MW: 69 kDa  
Observed MW: 69 kDa

**Buffer:** PBS, pH 7.3, containing 0.02% sodium azide, 50% glycerol.

**Concentration:** > 0.2 mg/ml

**Note:** This product is for research use only.

For Reference Only