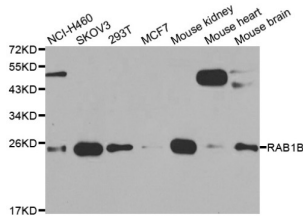
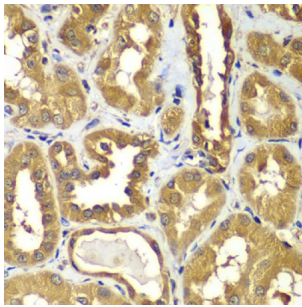


RAB1B, Member RAS Oncogene Family (RAB1B) Antibody

Catalogue No.: abx007007



Western blot analysis of extracts of various cell lines, using RAB1B antibody (abx007007) at 1/1000 dilution.



Immunohistochemistry of paraffin-embedded human kidney using RAB1B antibody (abx007007) at dilution of 1/100 (40x lens).

RAB1B Antibody is a Rabbit Polyclonal Antibody against RAB1B.

Target:	RAB1B, Member RAS Oncogene Family (RAB1B)
Clonality:	Polyclonal
Reactivity:	Human, Mouse, Rat
Tested Applications:	WB
Host:	Rabbit
Recommended dilutions:	WB: 1/500 - 1/2000. Optimal dilutions/concentrations should be determined by the end user.
Conjugation:	Unconjugated
Immunogen:	Recombinant fusion protein containing a sequence corresponding to amino acids 7-201 of human RAB1B.
Isotype:	IgG
Form:	Liquid
Purification:	Purified by affinity chromatography.

Datasheet

Version: 2.0.0
Revision date: 15 Jan 2025



Storage: Aliquot and store at -20°C. Avoid repeated freeze/thaw cycles.

UniProt Primary AC: Q9H0U4 ([UniProt](#), [ExPASy](#))

Gene Symbol: RAB1B

GeneID: [81876](#)

NCBI Accession: NP_112243.1

String: [9606.ENSP00000310226](#)

Molecular Weight: Calculated MW: 22 kDa
Observed MW: 28/22 kDa

Buffer: PBS, pH 7.3, containing 0.02% sodium azide, 50% glycerol.

Concentration: > 0.2 mg/ml

Note: This product is for research use only.

For Reference Only