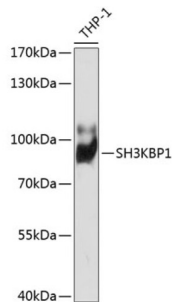


SH3 Domain Containing Kinase Binding Protein 1 (SH3KBP1) Antibody

Catalogue No.: abx006711



Western blot analysis of extracts of THP-1 cells using SH3KBP1 Antibody (1/1000 dilution).

SH3KBP1 Antibody is a Rabbit Polyclonal Antibody against SH3KBP1.

Target:	SH3 Domain Containing Kinase Binding Protein 1 (SH3KBP1)
Clonality:	Polyclonal
Reactivity:	Human, Mouse
Tested Applications:	WB
Host:	Rabbit
Recommended dilutions:	WB: 1/500 - 1/2000. Optimal dilutions/concentrations should be determined by the end user.
Conjugation:	Unconjugated
Immunogen:	Recombinant fusion protein corresponding to human SH3KBP1
Isotype:	IgG
Form:	Liquid
Purification:	Purified by affinity chromatography.
Storage:	Aliquot and store at -20°C. Avoid repeated freeze/thaw cycles.
UniProt Primary AC:	Q96B97 (UniProt , ExPASy)
Gene Symbol:	SH3KBP1
GeneID:	30011

Datasheet

Version: 3.0.0
Revision date: 31 Jan 2025



NCBI Accession: NP_114098.1

KEGG: hsa:30011

String: [9606.ENSP00000380921](#)

Molecular Weight: Calculated MW: 46 kDa/68 kDa/73 kDa
Observed MW: 73 kDa

Buffer: PBS, pH 7.3, containing 0.02% sodium azide, 50% glycerol.

Concentration: 1 mg/ml

Note: This product is for research use only.

For Reference Only