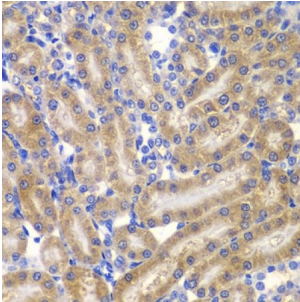
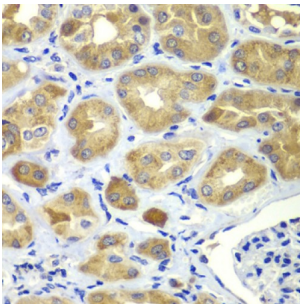


SHC-Transforming Protein 1 (SHC1) Antibody

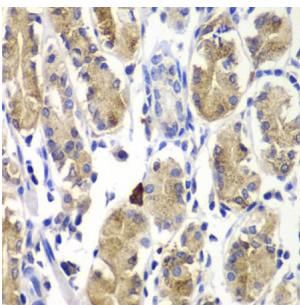
Catalogue No.: abx123067



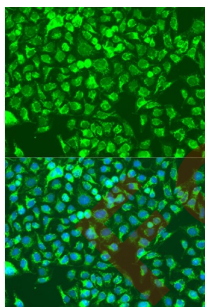
Immunohistochemistry of paraffin-embedded Rat kidney using SHC1 Antibody (1/100 dilution, 40x lens).



Immunohistochemistry of paraffin-embedded Human kidney using SHC1 Antibody (1/100 dilution, 40x lens).



Immunohistochemistry of paraffin-embedded Human stomach using SHC1 Antibody (1/100 dilution, 40x lens).



Immunofluorescence analysis of U2OS cells using SHC1 Antibody (1/100 dilution). Blue: DAPI for nuclear staining.

SHC1 Antibody is a Rabbit Polyclonal Antibody against SHC1.

Target: SHC-Transforming Protein 1 (SHC1)

Clonality: Polyclonal

Reactivity: Human, Mouse, Rat

Datasheet

Version: 2.0.0
Revision date: 01 Feb 2025



Tested Applications: IHC, IF/ICC

Host: Rabbit

Recommended dilutions: IHC-P: 1/50 - 1/200, IF/ICC: 1/50 - 1/200. Not tested in IHC-F. Optimal dilutions/concentrations should be determined by the end user.

Conjugation: Unconjugated

Immunogen: A synthetic peptide corresponding to human SHC1

Isotype: IgG

Form: Liquid

Purification: Purified by affinity chromatography.

Storage: Aliquot and store at -20°C. Avoid repeated freeze/thaw cycles.

UniProt Primary AC: P29353 ([UniProt](#), [ExPASy](#))

Gene Symbol: SHC1

GeneID: [6464](#)

NCBI Accession: NP_001189788.1

KEGG: hsa:6464

String: [9606.ENSP00000401303](#)

Buffer: PBS, pH 7.3, containing 0.02% sodium azide, 50% glycerol.

Concentration: 1 mg/ml

Note: This product is for research use only.