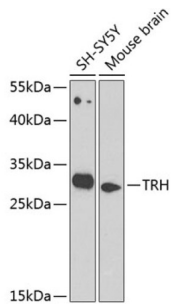


Datasheet

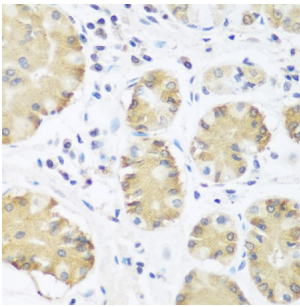
Version: 2.0.0
Revision date: 08 Nov 2024

Thyrotropin Releasing Hormone (TRH) Antibody

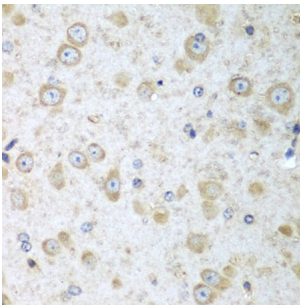
Catalogue No.: abx005909



Western blot analysis of extracts of various cell lines, using TRH antibody (abx005909) at 1/1000 dilution.



Immunohistochemistry of paraffin-embedded human stomach using TRH antibody (abx005909) at dilution of 1/100 (40x lens).



Immunohistochemistry of paraffin-embedded mouse brain using TRH antibody (abx005909) at dilution of 1/100 (40x lens).

TRH Antibody is a Rabbit Polyclonal Antibody against TRH.

Target: Thyrotropin Releasing Hormone (TRH)

Clonality: Polyclonal

Reactivity: Human, Mouse

Tested Applications: WB

Host: Rabbit

Recommended dilutions: WB: 1/500 - 1/2000. Optimal dilutions/concentrations should be determined by the end user.

Conjugation: Unconjugated

Datasheet

Version: 2.0.0
Revision date: 08 Nov 2024



| | |
|----------------------------|---|
| Immunogen: | A synthetic peptide corresponding to a sequence within amino acids 25-230 of human TRH. |
| Isotype: | IgG |
| Form: | Liquid |
| Purification: | Purified by affinity chromatography. |
| Storage: | Aliquot and store at -20°C. Avoid repeated freeze/thaw cycles. |
| UniProt Primary AC: | P20396 (UniProt , ExPASy) |
| Gene Symbol: | TRH |
| GeneID: | 7200 |
| NCBI Accession: | NP_009048.1 |
| KEGG: | hsa:7200 |
| String: | 9606.ENSP00000303452 |
| Molecular Weight: | Calculated MW: 27 kDa Observed MW: 27 kDa |
| Buffer: | PBS, pH 7.3, containing 0.05% Proclin-300, 50% glycerol. |
| Concentration: | 2.89 mg/ml |
| Note: | This product is for research use only. |

For Reference Only