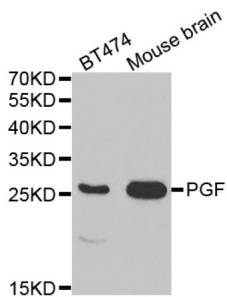
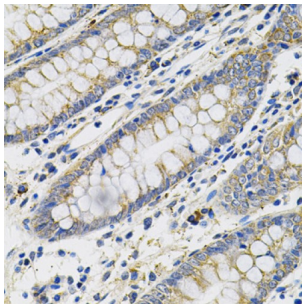


## Placenta Growth Factor (PGF) Antibody

Catalogue No.: abx001442



Western blot analysis of extracts of various cell lines, using PGF antibody (abx001442) at 1/1000 dilution.



Immunohistochemistry of paraffin-embedded human colon using PGF Antibody (abx001442) at dilution of 1/100 (40x lens).

PGF Antibody is a Rabbit Polyclonal antibody against PGF. This gene encodes a growth factor found in placenta which is homologous to vascular endothelial growth factor. Alternatively spliced transcripts encoding different isoforms have been found for this gene.

**Target:** Placenta Growth Factor (PGF)

**Clonality:** Polyclonal

**Reactivity:** Human, Mouse, Rat

**Tested Applications:** WB

**Host:** Rabbit

**Recommended dilutions:** WB: 1/500 - 1/2000. Optimal dilutions/concentrations should be determined by the end user.

**Conjugation:** Unconjugated

**Immunogen:** Recombinant fusion protein containing a sequence corresponding to amino acids 19-170 of human PLGF.

**Isotype:** IgG

**Form:** Liquid

# Datasheet

Version: 2.0.0  
Revision date: 08 Nov 2024



<b>Purification:</b>	Purified by affinity chromatography.
<b>Storage:</b>	Aliquot and store at -20°C. Avoid repeated freeze/thaw cycles.
<b>UniProt Primary AC:</b>	P49763 ( <a href="#">UniProt</a> , <a href="#">ExPASy</a> )
<b>Gene Symbol:</b>	PGF
<b>GeneID:</b>	<a href="#">5228</a>
<b>NCBI Accession:</b>	NP_002623.2
<b>KEGG:</b>	hsa:5228
<b>String:</b>	<a href="#">9606.ENSP00000451040</a>
<b>Molecular Weight:</b>	Calculated MW: 25 kDa Observed MW: 25/50 kDa
<b>Buffer:</b>	PBS, pH 7.3, containing 0.05% Proclin-300, 50% glycerol.
<b>Concentration:</b>	> 0.2 mg/ml
<b>Note:</b>	This product is for research use only.

For Reference Only