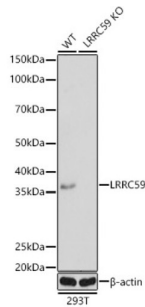
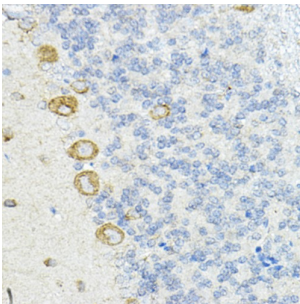


Leucine-Rich Repeat-Containing Protein 59 (LRRC59) Antibody

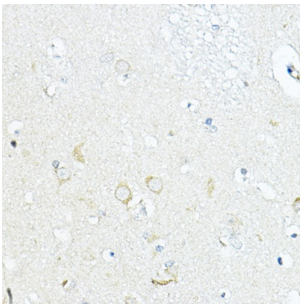
Catalogue No.: abx135940



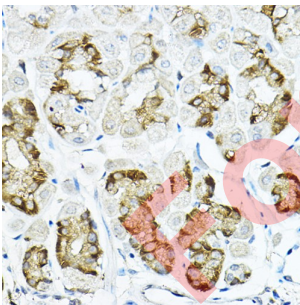
Western blot analysis of lysates from wild type (WT) and LRRC59 knockout (KO) 293T cells, using [KO Validated] LRRC59 Antibody at 1/1000 dilution. Secondary antibody: HRP-conjugated Goat anti-Rabbit IgG (H+L) at 1/10000 dilution. Lysates/proteins: 25 µg per lane. Blocking buffer: 3% nonfat dry milk in TBST. Exposure time: 1s.



Western blot analysis of lysates from wild type(WT) and LRRC59 knockout (KO) 293T(KO) cells, using [KO Validated] LRRC59 Antibody at 1/1000 dilution. Secondary antibody: HRP-conjugated Goat anti-Rabbit IgG (H+L) at 1/10000 dilution. Lysates/proteins: 25 µg per lane. Blocking buffer: 3% nonfat dry milk in TBST. Exposure time: 1s.



Immunohistochemistry analysis of paraffin-embedded Rat cerebellum using LRRC59 Antibody at dilution of 1/100 (40x lens). High pressure antigen retrieval performed in 0.01 M Citrate buffer (pH 6.0) prior to IHC staining.



Immunohistochemistry analysis of paraffin-embedded Human brain using LRRC59 Antibody at dilution of 1/100 (40x lens). High pressure antigen retrieval performed in 0.01 M Citrate buffer (pH 6.0) prior to IHC staining.

LRRC59 Antibody is a Rabbit Polyclonal against LRRC59.

Target: Leucine-Rich Repeat-Containing Protein 59 (LRRC59)

Clonality: Polyclonal

Reactivity: Human, Mouse, Rat

Datasheet

Version: 3.0.0
Revision date: 10 Mar 2025



Tested Applications:	ELISA, WB, IHC
Host:	Rabbit
Recommended dilutions:	ELISA: 1 µg/ml, WB: 1/500 - 1/1000, IHC-P: 1/50 - 1/200. Not tested in IHC-F. Optimal dilutions/concentrations should be determined by the end user.
Conjugation:	Unconjugated
Immunogen:	Recombinant fusion protein containing a sequence corresponding to amino acids 1-244 of human LRRC59.
Isotype:	IgG
Form:	Liquid
Purification:	Purified by affinity chromatography.
Storage:	Aliquot and store at -20°C. Avoid repeated freeze/thaw cycles.
UniProt Primary AC:	Q96AG4 (UniProt , ExPASy)
Gene Symbol:	LRRC59
GeneID:	55379
NCBI Accession:	NP_060979.2
KEGG:	hsa:55379
String:	9606.ENSP00000225972
Molecular Weight:	Calculated MW: 35 kDa Observed MW: 35 kDa
Buffer:	PBS, pH 7.3, containing 0.02% sodium azide, 50% glycerol.
Concentration:	> 0.2 mg/ml
Note:	THIS PRODUCT IS FOR RESEARCH USE ONLY. NOT FOR USE IN DIAGNOSTIC, THERAPEUTIC OR COSMETIC PROCEDURES. NOT FOR HUMAN OR ANIMAL CONSUMPTION.