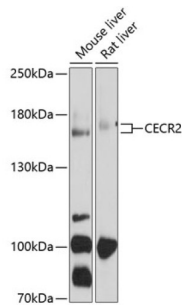


Cat Eye Syndrome Critical Region Protein 2 (CECR2) Antibody

Catalogue No.: abx136053



Western blot analysis of extracts of various cell lines using CECR2 Antibody (1/1000 dilution).

CECR2 Antibody is a Rabbit Polyclonal against CECR2.

Target:	Cat Eye Syndrome Critical Region Protein 2 (CECR2)
Clonality:	Polyclonal
Reactivity:	Mouse, Rat
Tested Applications:	WB
Host:	Rabbit
Recommended dilutions:	WB: 1/200 - 1/1000. Optimal dilutions/concentrations should be determined by the end user.
Conjugation:	Unconjugated
Immunogen:	Recombinant fusion protein corresponding to human CECR2
Isotype:	IgG
Form:	Liquid
Purification:	Purified by affinity chromatography.
Storage:	Aliquot and store at -20°C. Avoid repeated freeze/thaw cycles.
UniProt Primary AC:	Q9BXF3 (UniProt , ExPASy)
Gene Symbol:	CECR2
GeneID:	27443

Datasheet

Version: 3.0.0
Revision date: 23 Feb 2025



NCBI Accession: NP_113601.2

String: [9606.ENSF00000341219](#)

Molecular Weight: Calculated MW: 58 kDa/162 kDa/164 kDa
Observed MW: 164 kDa

Buffer: PBS, pH 7.3, containing 0.02% sodium azide, 50% glycerol.

Concentration: 1 mg/ml

Note: This product is for research use only.

For Reference Only