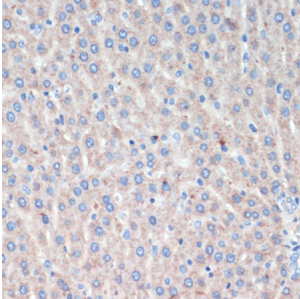
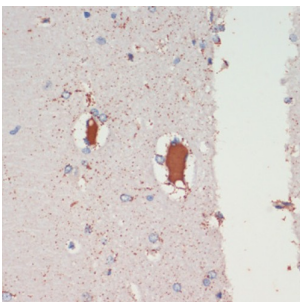


Leucine-Rich Repeat Serine/Threonine-Protein Kinase 2 (LRRK2) Antibody

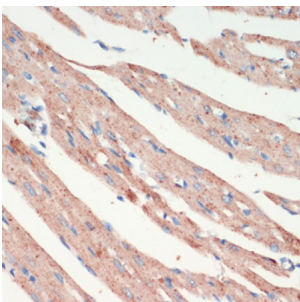
Catalogue No.: abx135710



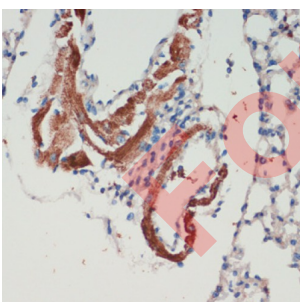
Immunohistochemistry of paraffin-embedded Rat liver using LRRK2 Antibody (1/200 dilution, 40x lens).



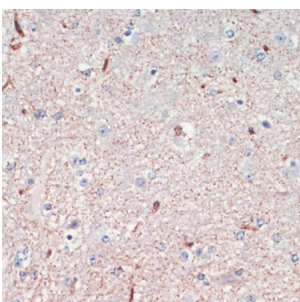
Immunohistochemistry of paraffin-embedded Rat brain using LRRK2 Antibody (1/200 dilution, 40x lens).



Immunohistochemistry of paraffin-embedded Rat heart using LRRK2 Antibody (1/200 dilution, 40x lens).



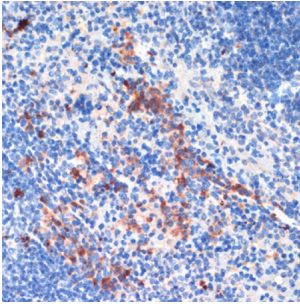
Immunohistochemistry of paraffin-embedded Mouse lung using LRRK2 Antibody (1/200 dilution, 40x lens).



Immunohistochemistry of paraffin-embedded Mouse spinal cord using LRRK2 Antibody (1/200 dilution, 40x lens).

Datasheet

Version: 1.0.0
Revision date: 13 Mar 2025



Immunohistochemistry of paraffin-embedded Mouse spleen using LRRK2 Antibody (1/200 dilution, 40x lens).

LRRK2 Antibody is a Rabbit Polyclonal against LRRK2.

Target:	Leucine-Rich Repeat Serine/Threonine-Protein Kinase 2 (LRRK2)
Clonality:	Polyclonal
Reactivity:	Human, Mouse, Rat
Tested Applications:	IHC
Host:	Rabbit
Recommended dilutions:	IHC-P: 1/50 - 1/200. Not tested in IHC-F. Optimal dilutions/concentrations should be determined by the end user.
Conjugation:	Unconjugated
Immunogen:	Recombinant fusion protein corresponding to human LRRK2
Isotype:	IgG
Form:	Liquid
Purification:	Purified by affinity chromatography.
Storage:	Aliquot and store at -20°C. Avoid repeated freeze/thaw cycles.
UniProt Primary AC:	Q5S007 (UniProt , ExPASy)
Gene Symbol:	LRRK2
GeneID:	120892
NCBI Accession:	NP_940980.3

Datasheet

Version: 1.0.0
Revision date: 13 Mar 2025



KEGG: hsa:120892

String: [9606.ENSP00000298910](#)

Buffer: PBS, pH 7.3, containing 0.02% sodium azide, 50% glycerol.

Concentration: 1 mg/ml

Note: THIS PRODUCT IS FOR RESEARCH USE ONLY. NOT FOR USE IN DIAGNOSTIC, THERAPEUTIC OR COSMETIC PROCEDURES. NOT FOR HUMAN OR ANIMAL CONSUMPTION.

For Reference Only