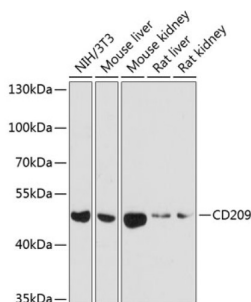


CD209 Antigen (CD209) Antibody

Catalogue No.: abx135720



Western blot analysis of extracts of various cell lines using CD209 Antibody (1/1000 dilution).

CD209 Antibody is a Rabbit Polyclonal against CD209.

Target: CD209 Antigen (CD209)

Clonality: Polyclonal

Reactivity: Human, Mouse, Rat

Tested Applications: WB

Host: Rabbit

Recommended dilutions: WB: 1/500 - 1/2000. Optimal dilutions/concentrations should be determined by the end user.

Conjugation: Unconjugated

Immunogen: Recombinant fusion protein corresponding to human CD209

Isotype: IgG

Form: Liquid

Purification: Purified by affinity chromatography.

Storage: Aliquot and store at -20°C. Avoid repeated freeze/thaw cycles.

UniProt Primary AC: Q9NNX6 ([UniProt](#), [ExPASy](#))

Gene Symbol: CD209

GeneID: [30835](#)

Datasheet

Version: 3.0.0
Revision date: 12 Mar 2025



NCBI Accession: NP_066978.1

String: [9606.ENSP00000315477](#)

Molecular Weight: Calculated MW: 4 kDa/18 kDa/30-45 kDa
Observed MW: 46 kDa

Buffer: PBS, pH 7.3, containing 0.02% sodium azide, 50% glycerol.

Concentration: 1 mg/ml

Note: THIS PRODUCT IS FOR RESEARCH USE ONLY. NOT FOR USE IN DIAGNOSTIC, THERAPEUTIC OR COSMETIC PROCEDURES. NOT FOR HUMAN OR ANIMAL CONSUMPTION.

For Reference Only