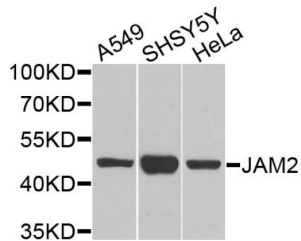


Datasheet

Version: 1.0.0
Revision date: 01 Sep 2024

Junctional Adhesion Molecule 2 (JAM2) Antibody

Catalogue No.: abx135898



JAM2 Antibody is a Rabbit Polyclonal against JAM2.

Target:	Junctional Adhesion Molecule 2 (JAM2)
Clonality:	Polyclonal
Reactivity:	Human, Mouse, Rat
Tested Applications:	WB
Host:	Rabbit
Recommended dilutions:	WB: 1/500 - 1/1000. Optimal dilutions/concentrations should be determined by the end user.
Conjugation:	Unconjugated
Immunogen:	Recombinant fusion protein containing a sequence corresponding to amino acids 29-238 of human JAM2.
Isotype:	IgG
Form:	Liquid
Purification:	Purified by affinity chromatography.
Storage:	Aliquot and store at -20°C. Avoid repeated freeze/thaw cycles.
UniProt Primary AC:	P57087 (UniProt , ExPASy)
Gene Symbol:	JAM2
GeneID:	58494

Datasheet

Version: 1.0.0
Revision date: 01 Sep 2024



NCBI Accession: NP_067042.1

KEGG: hsa:58494

String: [9606.ENSP00000383376](#)

Molecular Weight: Calculated MW: 33 kDa
Observed MW: 33 kDa

Buffer: PBS, pH 7.3, containing 0.02% sodium azide, 50% glycerol.

Concentration: > 0.2 mg/ml

Note: This product is for research use only.

For Reference Only