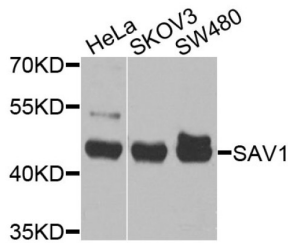


Protein Salvador Homolog 1 (SAV1) Antibody

Catalogue No.: abx135900



Western blot analysis of extracts of various cell lines using SAV1 Antibody (1/1000 dilution).

SAV1 Antibody is a Rabbit Polyclonal against SAV1.

Target:	Protein Salvador Homolog 1 (SAV1)
Clonality:	Polyclonal
Reactivity:	Human, Mouse
Tested Applications:	WB
Host:	Rabbit
Recommended dilutions:	WB: 1/1000 - 1/4000. Optimal dilutions/concentrations should be determined by the end user.
Conjugation:	Unconjugated
Immunogen:	Recombinant fusion protein corresponding to human SAV1
Isotype:	IgG
Form:	Liquid
Purification:	Purified by affinity chromatography.
Storage:	Aliquot and store at -20°C. Avoid repeated freeze/thaw cycles.
UniProt Primary AC:	Q9H4B6 (UniProt , ExpASY)
Gene Symbol:	SAV1
GeneID:	60485

Datasheet

Version: 4.0.0
Revision date: 11 Mar 2025



NCBI Accession: NP_068590.1

String: [9606.ENSP00000324729](#)

Molecular Weight: Calculated MW: 44 kDa
Observed MW: 45 kDa

Buffer: PBS, pH 7.3, containing 0.02% sodium azide, 50% glycerol.

Concentration: 1 mg/ml

Note: THIS PRODUCT IS FOR RESEARCH USE ONLY. NOT FOR USE IN DIAGNOSTIC, THERAPEUTIC OR COSMETIC PROCEDURES. NOT FOR HUMAN OR ANIMAL CONSUMPTION.

For Reference Only