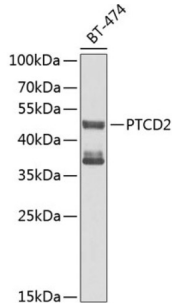


Pentatricopeptide Repeat-Containing Protein 2, Mitochondrial (PTCD2) Antibody

Catalogue No.: abx135902



Western blot analysis of extracts of BT474 cells using PTCD2 Antibody (1/1000 dilution).

PTCD2 Antibody is a Rabbit Polyclonal against PTCD2.

Target:	Pentatricopeptide Repeat-Containing Protein 2, Mitochondrial (PTCD2)
Clonality:	Polyclonal
Reactivity:	Human
Tested Applications:	WB
Host:	Rabbit
Recommended dilutions:	WB: 1/500 - 1/2000. Optimal dilutions/concentrations should be determined by the end user.
Conjugation:	Unconjugated
Immunogen:	Recombinant fusion protein corresponding to human PTCD2
Isotype:	IgG
Form:	Liquid
Purification:	Purified by affinity chromatography.
Storage:	Aliquot and store at -20°C. Avoid repeated freeze/thaw cycles.
UniProt Primary AC:	Q8WV60 (UniProt , ExPASy)
Gene Symbol:	PTCD2

Datasheet

Version: 2.0.0
Revision date: 12 Mar 2025



GeneID: [79810](#)

NCBI Accession: NP_079030.3

KEGG: hsa:79810

String: [9606.ENSP00000370013](#)

Molecular Weight: Calculated MW: 24 kDa/30 kDa/43 kDa
Observed MW: 44 kDa

Buffer: PBS, pH 7.3, containing 0.02% sodium azide, 50% glycerol.

Concentration: 1 mg/ml

Note: THIS PRODUCT IS FOR RESEARCH USE ONLY. NOT FOR USE IN DIAGNOSTIC, THERAPEUTIC OR COSMETIC PROCEDURES. NOT FOR HUMAN OR ANIMAL CONSUMPTION.

For Reference Only