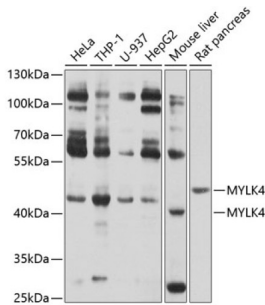


Myosin Light Chain Kinase 4 (MYLK4) Antibody

Catalogue No.: abx135920



Western blot analysis of extracts of various cell lines using MYLK4 Antibody (1/1000 dilution).

MYLK4 Antibody is a Rabbit Polyclonal against MYLK4.

Target: Myosin Light Chain Kinase 4 (MYLK4)**Clonality:** Polyclonal**Reactivity:** Human, Mouse, Rat**Tested Applications:** WB**Host:** Rabbit**Recommended dilutions:** WB: 1/500 - 1/2000. Optimal dilutions/concentrations should be determined by the end user.**Conjugation:** Unconjugated**Immunogen:** Recombinant fusion protein corresponding to human MYLK4**Isotype:** IgG**Form:** Liquid**Purification:** Purified by affinity chromatography.**Storage:** Aliquot and store at -20°C. Avoid repeated freeze/thaw cycles.**UniProt Primary AC:** Q86YV6 ([UniProt](#), [ExpASY](#))**Gene Symbol:** MYLK4**GeneID:** [340156](#)

Datasheet

Version: 3.0.0
Revision date: 13 Mar 2025



NCBI Accession: NP_001012418.2

KEGG: hsa:340156

String: [9606.ENSP00000274643](#)

Molecular Weight: Calculated MW: 44 kDa
Observed MW: 40 kDa/44 kDa

Buffer: PBS, pH 7.3, containing 0.02% sodium azide, 50% glycerol.

Concentration: 1 mg/ml

Note: THIS PRODUCT IS FOR RESEARCH USE ONLY. NOT FOR USE IN DIAGNOSTIC, THERAPEUTIC OR COSMETIC PROCEDURES. NOT FOR HUMAN OR ANIMAL CONSUMPTION.

For Reference Only