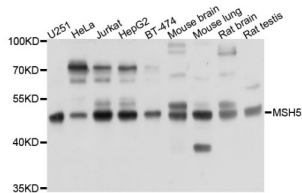


Protein Kinase cAMP-Dependent Type I Regulatory Subunit Beta (PRKAR1B) Antibody

Catalogue No.: abx136035



Western blot analysis of extracts of various cell lines, using PRKAR1B antibody (abx136035) at 1/1000 dilution.

PRKAR1B Antibody is a Rabbit Polyclonal against PRKAR1B.

Target:	Protein Kinase cAMP-Dependent Type I Regulatory Subunit Beta (PRKAR1B)
Clonality:	Polyclonal
Reactivity:	Human, Mouse, Rat
Tested Applications:	WB
Host:	Rabbit
Recommended dilutions:	WB: 1/1000 - 1/4000. Optimal dilutions/concentrations should be determined by the end user.
Conjugation:	Unconjugated
Immunogen:	Recombinant fusion protein containing a sequence corresponding to amino acids 190-290 of human PRKAR1B.
Isotype:	IgG
Form:	Liquid
Purification:	Purified by affinity chromatography.
Storage:	Aliquot and store at -20°C. Avoid repeated freeze/thaw cycles.
UniProt Primary AC:	P31321 (UniProt , ExPASy)
Gene Symbol:	PRKAR1B

Datasheet

Version: 2.0.0
Revision date: 25 Nov 2024



GeneID: [5575](#)

NCBI Accession: NP_002726.1

KEGG: hsa:5575

String: [9606.ENSP00000385749](#)

Molecular Weight: Calculated MW: 43 kDa
Observed MW: 43 kDa

Buffer: PBS, pH 7.3, containing 0.02% sodium azide, 50% glycerol.

Concentration: > 0.2 mg/ml

Note: This product is for research use only.

For Reference Only