

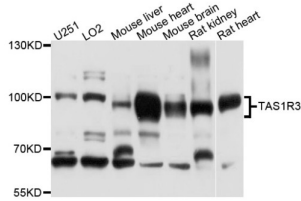
Datasheet

Version: 2.0.0
Revision date: 27 Dec 2024



Taste 1 Receptor Member 3 (TAS1R3) Antibody

Catalogue No.: abx136067



Western blot analysis of extracts of various cell lines, using TAS1R3 antibody (abx136067) at 1/1000 dilution.

TAS1R3 Antibody is a Rabbit Polyclonal against TAS1R3.

Target:	Taste 1 Receptor Member 3 (TAS1R3)
Clonality:	Polyclonal
Reactivity:	Human, Mouse, Rat
Tested Applications:	WB
Host:	Rabbit
Recommended dilutions:	WB: 1/500 - 1/1000. Optimal dilutions/concentrations should be determined by the end user.
Conjugation:	Unconjugated
Immunogen:	Recombinant fusion protein containing a sequence corresponding to amino acids 400-570 of human TAS1R3.
Isotype:	IgG
Form:	Liquid
Purification:	Purified by affinity chromatography.
Storage:	Aliquot and store at -20°C. Avoid repeated freeze/thaw cycles.
UniProt Primary AC:	Q7RTX0 (UniProt , ExPASy)
Gene Symbol:	TAS1R3
GenelD:	83756

Datasheet

Version: 2.0.0
Revision date: 27 Dec 2024

NCBI Accession: NP_689414.2

KEGG: hsa:83756

String: [9606.ENSP00000344411](#)

Molecular Weight: Calculated MW: 93 kDa
Observed MW: 93 kDa

Buffer: PBS, pH 7.3, containing 0.05% Proclin-300, 50% glycerol.

Concentration: > 0.2 mg/ml

Note: This product is for research use only.

For Reference Only