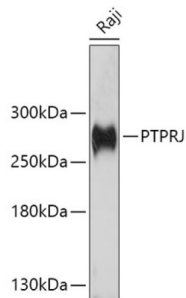


Datasheet

Version: 3.0.0
Revision date: 13 Mar 2025

Protein Tyrosine Phosphatase Receptor Type J (PTPRJ) Antibody

Catalogue No.: abx136077



Western blot analysis of extracts of Raji cells using PTPRJ Antibody (1/1000 dilution).

PTPRJ Antibody is a Rabbit Polyclonal against PTPRJ.

Target:	Protein Tyrosine Phosphatase Receptor Type J (PTPRJ)
Clonality:	Polyclonal
Reactivity:	Human, Mouse
Tested Applications:	WB
Host:	Rabbit
Recommended dilutions:	WB: 1/200 - 1/1000. Optimal dilutions/concentrations should be determined by the end user.
Conjugation:	Unconjugated
Immunogen:	Recombinant fusion protein corresponding to human PTPRJ
Isotype:	IgG
Form:	Liquid
Purification:	Purified by affinity chromatography.
Storage:	Aliquot and store at -20°C. Avoid repeated freeze/thaw cycles.
UniProt Primary AC:	Q12913 (UniProt , ExPASy)
Gene Symbol:	PTPRJ
GeneID:	5795

Datasheet

Version: 3.0.0
Revision date: 13 Mar 2025



NCBI Accession: NP_002834.3

KEGG: hsa:5795

String: [9606.ENSP00000400010](#)

Molecular Weight: Calculated MW: 57 kDa/145 kDa
Observed MW: 260 kDa

Buffer: PBS, pH 7.3, containing 0.02% sodium azide, 50% glycerol.

Concentration: 1 mg/ml

Note: THIS PRODUCT IS FOR RESEARCH USE ONLY. NOT FOR USE IN DIAGNOSTIC, THERAPEUTIC OR COSMETIC PROCEDURES. NOT FOR HUMAN OR ANIMAL CONSUMPTION.

For Reference Only