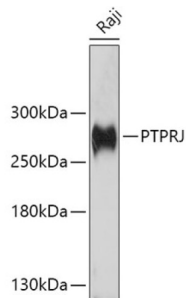


# Datasheet

Version: 3.0.0  
Revision date: 13 Mar 2025

## Protein Tyrosine Phosphatase Receptor Type J (PTPRJ) Antibody

Catalogue No.: abx136077



Western blot analysis of extracts of Raji cells using PTPRJ Antibody (1/1000 dilution).

PTPRJ Antibody is a Rabbit Polyclonal against PTPRJ.

<b>Target:</b>	Protein Tyrosine Phosphatase Receptor Type J (PTPRJ)
<b>Clonality:</b>	Polyclonal
<b>Reactivity:</b>	Human, Mouse
<b>Tested Applications:</b>	WB
<b>Host:</b>	Rabbit
<b>Recommended dilutions:</b>	WB: 1/200 - 1/1000. Optimal dilutions/concentrations should be determined by the end user.
<b>Conjugation:</b>	Unconjugated
<b>Immunogen:</b>	Recombinant fusion protein corresponding to human PTPRJ
<b>Isotype:</b>	IgG
<b>Form:</b>	Liquid
<b>Purification:</b>	Purified by affinity chromatography.
<b>Storage:</b>	Aliquot and store at -20°C. Avoid repeated freeze/thaw cycles.
<b>UniProt Primary AC:</b>	Q12913 ( <a href="#">UniProt</a> , <a href="#">ExPASy</a> )
<b>Gene Symbol:</b>	PTPRJ
<b>GeneID:</b>	<a href="#">5795</a>

# Datasheet

Version: 3.0.0  
Revision date: 13 Mar 2025



**NCBI Accession:** NP\_002834.3

**KEGG:** hsa:5795

**String:** [9606.ENSP00000400010](#)

**Molecular Weight:** Calculated MW: 57 kDa/145 kDa  
Observed MW: 260 kDa

**Buffer:** PBS, pH 7.3, containing 0.02% sodium azide, 50% glycerol.

**Concentration:** 1 mg/ml

**Note:** THIS PRODUCT IS FOR RESEARCH USE ONLY. NOT FOR USE IN DIAGNOSTIC, THERAPEUTIC OR COSMETIC PROCEDURES. NOT FOR HUMAN OR ANIMAL CONSUMPTION.

For Reference Only