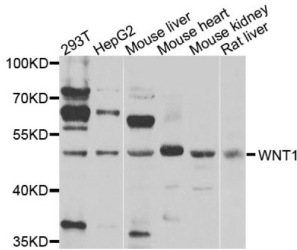


## Proto-Oncogene Wnt-1 (WNT1) Antibody

Catalogue No.: abx135727



Western blot analysis of extracts of various cell lines, using WNT1 antibody (abx135727) at 1/1000 dilution.

WNT1 Antibody is a Rabbit Polyclonal against WNT1.

<b>Target:</b>	Proto-Oncogene Wnt-1 (WNT1)
<b>Clonality:</b>	Polyclonal
<b>Reactivity:</b>	Human, Mouse, Rat
<b>Tested Applications:</b>	WB, IHC, IF/ICC
<b>Host:</b>	Rabbit
<b>Recommended dilutions:</b>	WB: 1/2000 - 1/9000, IHC-P: 1/50 - 1/200, IF/ICC: 1/50 - 1/200. Not tested in IHC-F. Optimal dilutions/concentrations should be determined by the end user.
<b>Conjugation:</b>	Unconjugated
<b>Immunogen:</b>	Recombinant fusion protein containing a sequence corresponding to amino acids 231-370 of human WNT1.
<b>Isotype:</b>	IgG
<b>Form:</b>	Liquid
<b>Purification:</b>	Purified by affinity chromatography.
<b>Storage:</b>	Aliquot and store at -20°C. Avoid repeated freeze/thaw cycles.
<b>UniProt Primary AC:</b>	P04628 ( <a href="#">UniProt</a> , <a href="#">ExpASY</a> )
<b>Gene Symbol:</b>	WNT1
<b>GeneID:</b>	<a href="#">7471</a>

# Datasheet

Version: 2.0.0  
Revision date: 15 Nov 2024



**NCBI Accession:** NP\_005421.1

**KEGG:** hsa:7471

**String:** [9606.ENSP00000293549](#)

**Molecular Weight:** Calculated MW: 41 kDa  
Observed MW: 41 kDa

**Buffer:** PBS, pH 7.3, containing 0.09% sodium azide, 50% glycerol.

**Concentration:** > 0.2 mg/ml

**Note:** This product is for research use only.

For Reference Only