

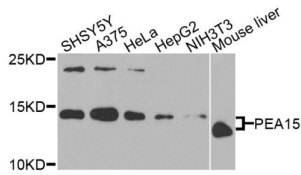
# Datasheet

Version: 2.0.0  
Revision date: 11 Jan 2025

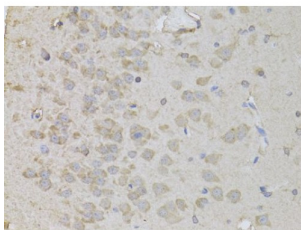


## Proliferation And Apoptosis Adaptor Protein 15 (PEA15) Antibody

Catalogue No.: abx135876



Western blot analysis of extracts of various cell lines, using PEA15 antibody (abx135876) at 1/1000 dilution.



Immunohistochemistry of paraffin-embedded rat brain using PEA15 antibody (abx135876) at dilution of 1/100 (40x lens).

PEA15 Antibody is a Rabbit Polyclonal against PEA15.

<b>Target:</b>	Proliferation And Apoptosis Adaptor Protein 15 (PEA15)
<b>Clonality:</b>	Polyclonal
<b>Reactivity:</b>	Human, Mouse
<b>Tested Applications:</b>	WB
<b>Host:</b>	Rabbit
<b>Recommended dilutions:</b>	WB: 1/500 - 1/2000. Optimal dilutions/concentrations should be determined by the end user.
<b>Conjugation:</b>	Unconjugated
<b>Immunogen:</b>	Recombinant fusion protein containing a sequence corresponding to amino acids 1-130 of human PEA15.
<b>Isotype:</b>	IgG
<b>Form:</b>	Liquid
<b>Purification:</b>	Purified by affinity chromatography.

# Datasheet

Version: 2.0.0  
Revision date: 11 Jan 2025



**Storage:** Aliquot and store at -20°C. Avoid repeated freeze/thaw cycles.

**UniProt Primary AC:** Q15121 ([UniProt](#), [ExPASy](#))

**Gene Symbol:** PEA15

**GeneID:** [8682](#)

**NCBI Accession:** NP\_003759.1

**KEGG:** hsa:8682

**String:** [9606.ENSP00000357055](#)

**Molecular Weight:** Calculated MW: 15 kDa  
Observed MW: 15 kDa

**Buffer:** PBS, pH 7.3, containing 0.02% sodium azide, 50% glycerol.

**Concentration:** > 0.2 mg/ml

**Note:** This product is for research use only.

For Reference Only