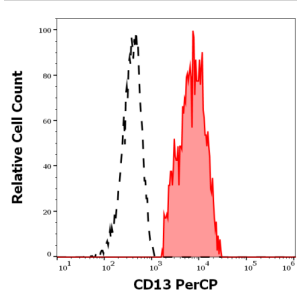
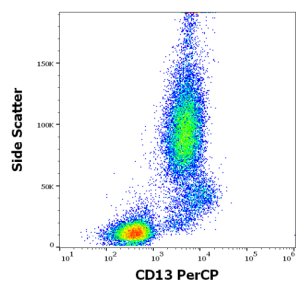


Aminopeptidase N (ANPEP) Antibody (PerCP)

Catalogue No.: abx139041



Flow cytometry analysis of Human peripheral whole blood using ANPEP Antibody (1 µg/ml).



Flow cytometry analysis of Human peripheral whole blood using ANPEP Antibody (1 µg/ml).

Aminopeptidase N / CD13 (ANPEP) Antibody is a Mouse Monoclonal against CD13.

Target:	Aminopeptidase N (ANPEP)
Clonality:	Monoclonal
Clone:	Q678
Reactivity:	Human, Monkey
Tested Applications:	FCM
Host:	Mouse
Recommended dilutions:	FCM: 10 µl/100 µl of whole blood or 10 ⁶ cells. Validated in IHC-F. Optimal dilutions/concentrations should be determined by the end user.
Conjugation:	PerCP
Excitation/Emission:	480/675
Laser Line:	488
Immunogen:	Human AML cells.

Datasheet

Version: 3.0.0
Revision date: 10 Mar 2025



Isotype:	IgG ₁
Storage:	Store in the dark at 2-8°C. Avoid exposure to light. Do not freeze.
UniProt Primary AC:	P15144 (UniProt , ExPASy)
Gene Symbol:	ANPEP
GeneID:	290
OMIM:	151530
HGNC:	500
KEGG:	hsa:290
Ensembl:	ENSG00000166825
String:	9606.ENSP00000300060
Buffer:	Stabilizing PBS solution containing 15 mM sodium azide.
Specificity:	The antibody recognises the human CD13 cell surface glycoprotein, a 150 kDa molecule expressed on granulocytes, endothelial cells, epithelial cells and myeloid progenitors.
Note:	THIS PRODUCT IS FOR RESEARCH USE ONLY. NOT FOR USE IN DIAGNOSTIC, THERAPEUTIC OR COSMETIC PROCEDURES. NOT FOR HUMAN OR ANIMAL CONSUMPTION.

For Reference Only