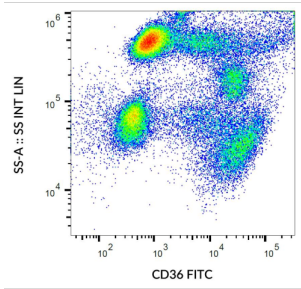
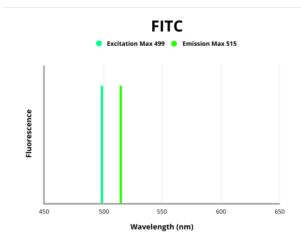


Platelet Glycoprotein 4 (CD36) Antibody (FITC)

Catalogue No.: abx139255



Surface staining of CD36 in human peripheral blood with CD36 Antibody (FITC).



Fluorescence emission spectra of FITC.

CD36 Antibody is a Mouse Monoclonal against CD36.

Target: Platelet Glycoprotein 4 (CD36)

Clonality: Monoclonal

Clone: G280

Reactivity: Human

Tested Applications: FCM

Host: Mouse

Recommended dilutions: FCM: 4 μ l/100 μ l of whole blood or 10^6 cells. Optimal dilutions/concentrations should be determined by the end user. The content of a vial (0.4 ml) is sufficient for 100 tests.

Conjugation: FITC

Excitation/Emission: 499/515

Laser Line: 488

Immunogen: Living Human myeloid cells.

Datasheet

Version: 2.0.0
Revision date: 21 Nov 2024



Isotype:	IgM Kappa
Storage:	Store in the dark at 2-8°C. Avoid exposure to light. Do not freeze.
UniProt Primary AC:	P16671 (UniProt , ExPASy)
Gene Symbol:	CD36
GeneID:	948
KEGG:	hsa:948
String:	9606.ENSP00000399421
Buffer:	Stabilizing TBS solution with 15 mM sodium azide.
Specificity:	The mouse monoclonal antibody recognizes CD36 (GPIIb), a 85-113 kDa integral membrane glycoprotein expressed on platelets, macrophages, endothelial cells, early erythroid cells and megakaryocytes.
Note:	This product is for research use only.

For Reference Only