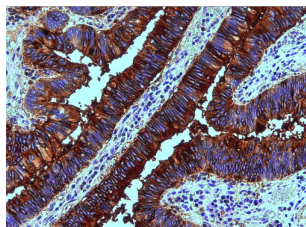
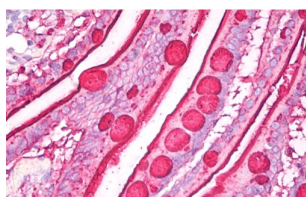


Blood Group Lewis b Antibody

Catalogue No.: abx140259



Immunohistochemistry analysis of paraffin-embedded Human colon adenocarcinoma using Blood Group Lewis b Antibody.



Immunohistochemistry analysis of paraffin-embedded Human small intestine using Blood Group Lewis b Antibody.

Blood Group Lewis b Antibody is a Mouse Monoclonal against Blood Group Lewis b.

Target: Blood Group Lewis b

Clonality: Monoclonal

Clone: L049

Reactivity: Human

Tested Applications: ELISA, WB, IHC

Host: Mouse

Recommended dilutions: IHC-P: 5-10 µg/ml. Not tested in IHC-F. Optimal dilutions/concentrations should be determined by the end user.

Conjugation: Unconjugated

Immunogen: Mucin isolated by size exclusion chromatography from an ovarian cyst fluid (pure endocervical type according to the Fenoglio's classification).

Isotype: IgG₁

Purification: Purified by Protein A affinity chromatography.

Datasheet

Version: 4.0.0

Revision date: 30 Apr 2025



Storage: Store at 2-8°C. Do not freeze.

Buffer: PBS solution with 15 mM sodium azide.

Specificity: The antibody reacts with Lewis^b blood group antigen, a carbohydrate determinant carried on both glycolipids and glycoproteins, detected on erythrocytes, certain epithelial cells, and in secretions of certain individuals.

Concentration: 1 mg/ml

Note: THIS PRODUCT IS FOR RESEARCH USE ONLY. NOT FOR USE IN DIAGNOSTIC, THERAPEUTIC OR COSMETIC PROCEDURES. NOT FOR HUMAN OR ANIMAL CONSUMPTION.

For Reference Only